

## POC1A RABBIT PAB

**Cat.#:** S219356

**Product Name:** Anti-POC1A Rabbit Polyclonal Antibody

**Synonyms:** PIX2; SOFT; WDR51A

**UNIPROT ID:** Q8NBT0 (Gene Accession - BC007417 )

**Background:** POC1 proteins contain an N-terminal WD40 domain and a C-terminal coiled coil domain and are part of centrosomes. They play an important role in basal body and cilia formation. This gene encodes one of the two POC1 proteins found in humans. Mutations in this gene result in short stature, onychodysplasia, facial dysmorphism, and hypotrichosis (SOFT) syndrome.

**Immunogen:** Fusion protein of human POC1A

**Applications:** ELISA, WB, IHC

**Recommended Dilutions:** IHC: 50-200;WB: 1000-5000;ELISA: 5000-10000

**Host Species:** Rabbit

**Clonality:** Rabbit Polyclonal

**Isotype:** Immunogen-specific rabbit IgG

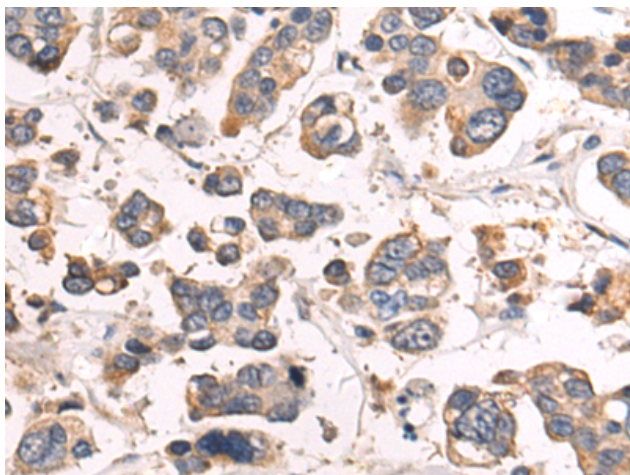
**Purification:** Antigen affinity purification

**Species Reactivity:** Human, Mouse

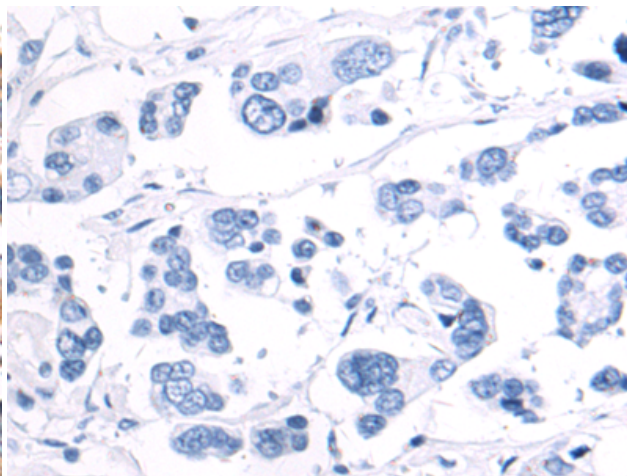
**Constituents:** PBS (without Mg<sup>2+</sup> and Ca<sup>2+</sup>), pH 7.4, 150 mM NaCl, 0.05% Sodium Azide and 40% glycerol

**Research Areas:** Cell Biology

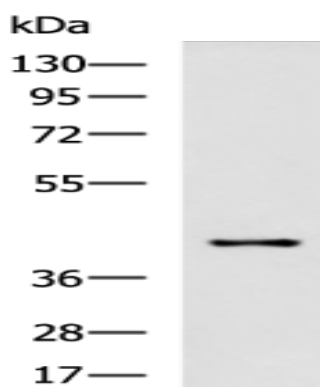
**Storage & Shipping:** Store at -20°C. Avoid repeated freezing and thawing



Immunohistochemistry analysis of paraffin embedded Human colorectal cancer tissue using 219356(POC1A Antibody) at a dilution of 1/80(Cytoplasm).



In comparison with the IHC on the left, the same paraffin-embedded Human colorectal cancer tissue is first treated with the fusion protein and then with 219356(Anti-POC1A Antibody) at dilution 1/80.



Gel: 8%SDS-PAGE, Lysate: 40  $\mu$ g;  
Lane: Mouse placenta tissue lysate;  
Primary antibody: 219356(POC1A Antibody) at dilution 1/1000;  
Secondary antibody: HRP-conjugated Goat anti rabbit IgG at 1/5000 dilution;  
Exposure time: 1 minute