

## PMCA1 RABBIT MAB

**Cat.#:** N262737

**Product Name:** Anti-PMCA1 Rabbit Monoclonal Antibody

**Synonyms:** ATP2B1; PMCA1

**UNIPROT ID:** P20020

**Background:** This magnesium-dependent enzyme catalyzes the hydrolysis of ATP coupled with the transport of calcium out of the cell.

**Immunogen:** A synthetic peptide of human PMCA1

**Applications:** WB,IHC-P

**Recommended Dilutions:** WB: 1/500-1/1000 IHC: 1/50-1/100

**Host Species:** Rabbit

**Clonality:** Rabbit Monoclonal

**Clone ID:** R02-8C5

**MW:** Calculated MW: 135 kDa; Observed MW: 130-250 kDa

**Isotype:** IgG

**Purification:** Affinity Purified

**Species Reactivity:** Human,Mouse,Rat

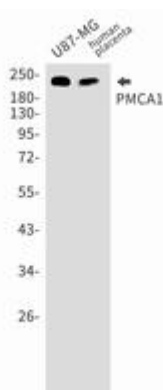
**Conjugation:** Unconjugated

**Modification:** Unmodified

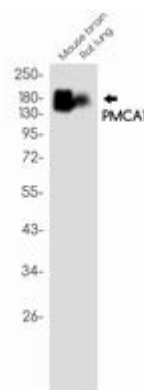
**Constituents:** PBS (without Mg<sup>2+</sup> and Ca<sup>2+</sup>), pH 7.3 containing 50% glycerol, 0.5% BSA and 0.02% sodium azide

**Research Areas:** Signal Transduction

**Storage & Shipping:** Store at -20°C. Avoid repeated freezing and thawing



Western blot analysis of PMCA1 in U87-MG, Human placenta lysates using PMCA1 antibody.



Western blot analysis of PMCA1 in mouse brain, rat lung lysates using PMCA1 antibody.



# Product Description

Pioneering GTPase and Oncogene Product Development since 2010

---