

PLXND1 RABBIT PAB

Cat.#: S220822

Product Name: Anti-PLXND1 Rabbit Polyclonal Antibody

Synonyms: CHTD9; PLEXD1

UNIPROT ID: Q9Y4D7 (Gene Accession - NP_055918)

Background: Enables protein domain specific binding activity. Predicted to be involved in several processes, including endothelial cell migration; nervous system development; and regulation of angiogenesis. Predicted to act upstream of or within several processes, including circulatory system development; dichotomous subdivision of terminal units involved in salivary gland branching; and positive regulation of protein binding activity. Located in lamellipodium.

Immunogen: Synthetic peptide of human PLXND1

Applications: ELISA, WB, IHC

Recommended Dilutions: IHC: 50-200;WB: 200-1000;ELISA: 2000-5000

Host Species: Rabbit

Clonality: Rabbit Polyclonal

Isotype: Immunogen-specific rabbit IgG

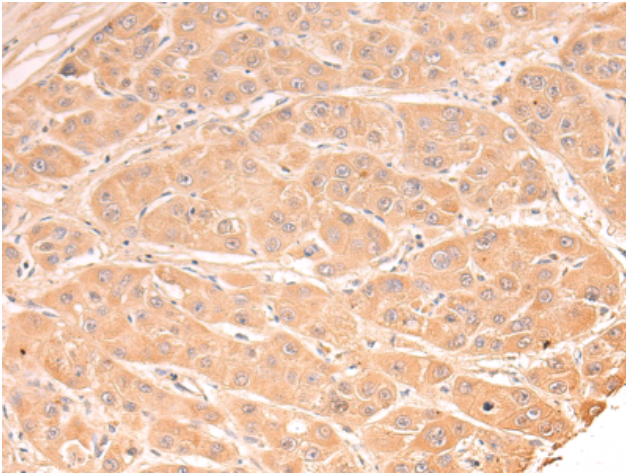
Purification: Antigen affinity purification

Species Reactivity: Human, Mouse

Constituents: PBS (without Mg²⁺ and Ca²⁺), pH 7.4, 150 mM NaCl, 0.05% Sodium Azide and 40% glycerol

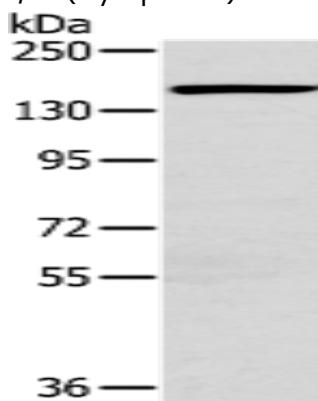
Research Areas: Cardiovascular

Storage & Shipping: Store at -20°C. Avoid repeated freezing and thawing



✘ Immunohistochemistry analysis of paraffin-embedded Human prostate cancer tissue using 220822(Anti-PLXND1 Antibody) at a dilution of 1/40.

Immunohistochemistry analysis of paraffin-embedded Human liver cancer tissue using 220822(PLXND1 Antibody) at a dilution of 1/40(Cytoplasm).



Gel: 6%SDS-PAGE, Lysate: 40 μ g;
Lane: HbmeC cell lysate;
Primary antibody: 220822(PLXND1 Antibody) at dilution 1/200;
Secondary antibody: Goat anti rabbit IgG at 1/8000 dilution;
Exposure time: 10 minutes