

PLXNA3 RABBIT PAB

Cat.#: S220818

Product Name: Anti-PLXNA3 Rabbit Polyclonal Antibody

Synonyms: 6.3; PLXN3; PLXN4; XAP-6; HSSEXGENE

UNIPROT ID: P51805 (Gene Accession - NP_059984)

Background: This gene encodes a member of the plexin class of proteins. The encoded protein is a class 3 semaphorin receptor, and may be involved in cytoskeletal remodeling and as well as apoptosis. Studies of a similar gene in zebrafish suggest that it is important for axon pathfinding in the developing nervous system. This gene may be associated with tumor progression.

Immunogen: Synthetic peptide of human PLXNA3

Applications: ELISA, IHC

Recommended Dilutions: IHC: Oct-50; ELISA: 1000-2000

Host Species: Rabbit

Clonality: Rabbit Polyclonal

Isotype: Immunogen-specific rabbit IgG

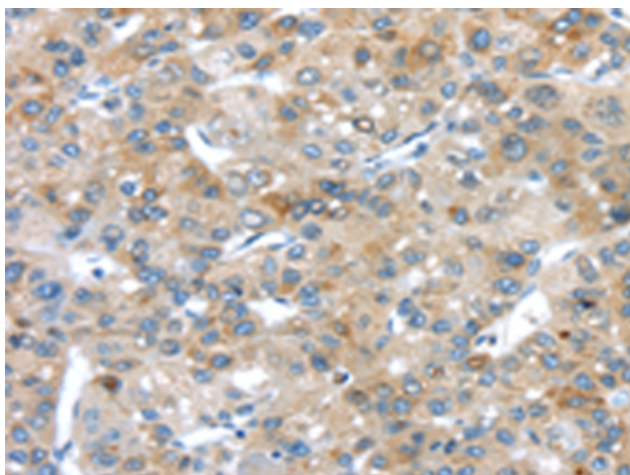
Purification: Antigen affinity purification

Species Reactivity: Human, Mouse, Rat

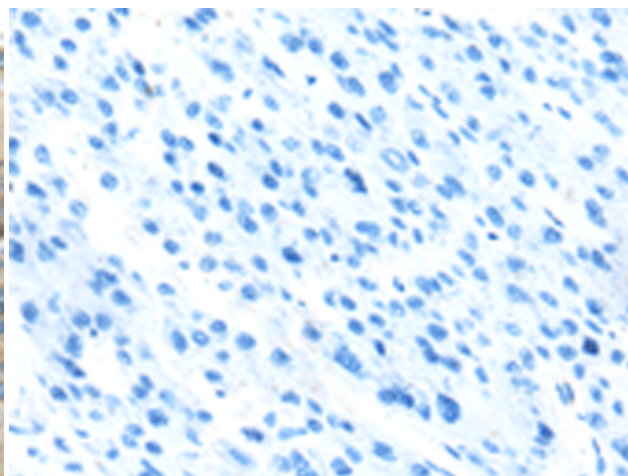
Constituents: PBS (without Mg²⁺ and Ca²⁺), pH 7.4, 150 mM NaCl, 0.05% Sodium Azide and 40% glycerol

Research Areas: Neuroscience

Storage & Shipping: Store at -20°C. Avoid repeated freezing and thawing



Immunohistochemistry analysis of paraffin embedded Human liver cancer tissue using 220818(PLXNA3 Antibody) at a dilution of 1/20(Cell membrane).



In comparison with the IHC on the left, the same paraffin-embedded Human liver cancer tissue is first treated with the synthetic peptide and then with 220818(Anti-PLXNA3 Antibody) at dilution 1/20.