

## PLXNA1 RABBIT PAB

**Cat.#:** S220816

**Product Name:** Anti-PLXNA1 Rabbit Polyclonal Antibody

**Synonyms:** NOV; NOV; PLXN1; PLEXIN-A1

**UNIPROT ID:** Q9UIW2 (Gene Accession - NP\_115618 )

**Background:** Plexins are a family of large, transmembrane receptors for multiple classes of semaphorins in vertebrates. Plexins are widely expressed, and regions of their extracellular domain are homologous to both scatter factor receptors and semaphorin domains.

**Immunogen:** Synthetic peptide of human PLXNA1

**Applications:** ELISA, IHC

**Recommended Dilutions:** IHC: 50-200; ELISA: 2000-5000

**Host Species:** Rabbit

**Clonality:** Rabbit Polyclonal

**Isotype:** Immunogen-specific rabbit IgG

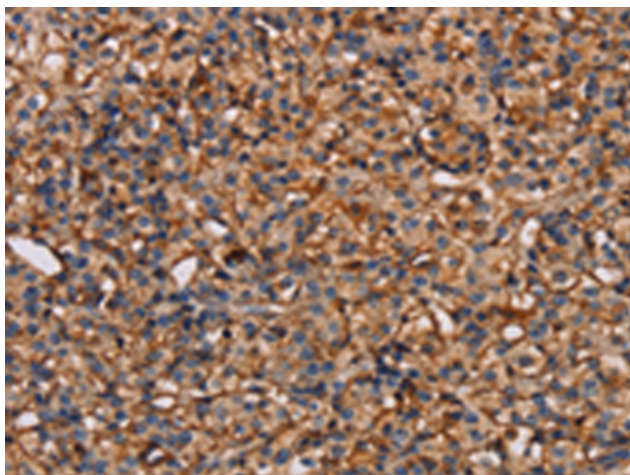
**Purification:** Antigen affinity purification

**Species Reactivity:** Human, Mouse

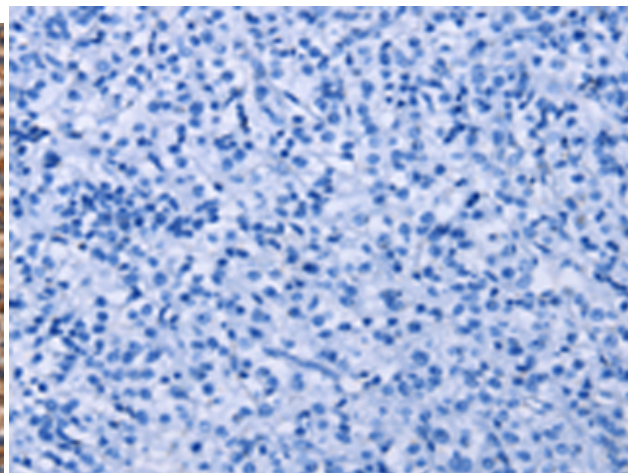
**Constituents:** PBS (without Mg<sup>2+</sup> and Ca<sup>2+</sup>), pH 7.4, 150 mM NaCl, 0.05% Sodium Azide and 40% glycerol

**Research Areas:** Neuroscience

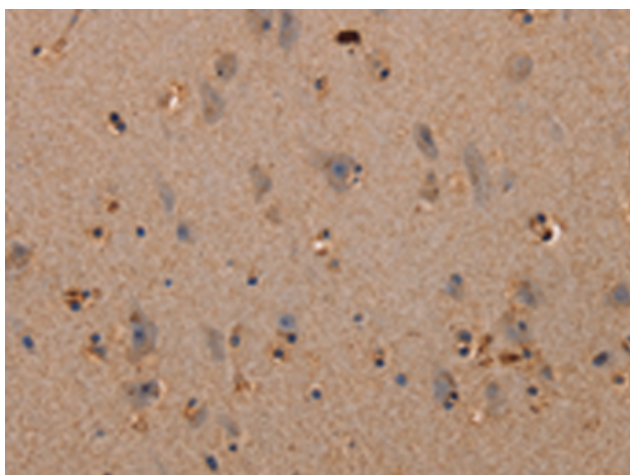
**Storage & Shipping:** Store at -20°C. Avoid repeated freezing and thawing



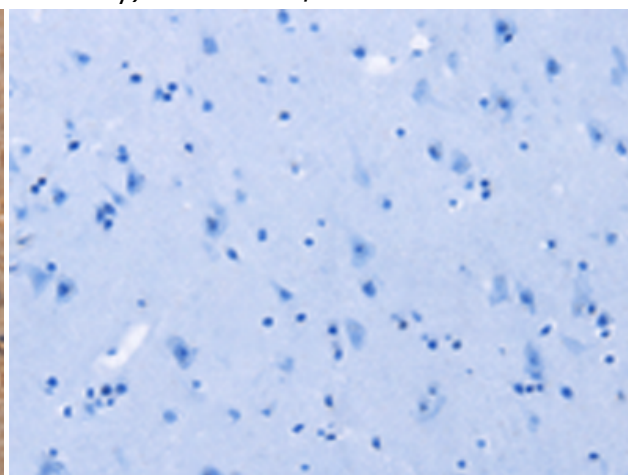
Immunohistochemistry analysis of paraffin-embedded Human prostate cancer tissue using 220816 (Anti-PLXNA1 Antibody) at a dilution of 1/30 (Cytoplasm).



In comparison with the IHC on the left, the same paraffin-embedded Human prostate cancer tissue is first treated with the synthetic peptide and then with 220816 (Anti-PLXNA1 Antibody) at dilution 1/30.



The image on the left is immunohistochemistry of paraffin-embedded Human brain tissue using 220816 (Anti-PLXNA1 Antibody) at a dilution of 1/30.



In comparison with the IHC on the left, the same paraffin-embedded Human brain tissue is first treated with synthetic peptide and then with D262060 (Anti-PLXNA1 Antibody) at dilution 1/30.