

PLIN3 RABBIT PAB

Cat.#: S217910

Product Name: Anti-PLIN3 Rabbit Polyclonal Antibody

Synonyms: PPI7; TIP47; M6PRBP1

UNIPROT ID: O60664 (Gene Accession - BC005818)

Background: Mannose 6-phosphate receptors (MPRs) deliver lysosomal hydrolase from the Golgi to endosomes and then return to the Golgi complex. The protein encoded by this gene interacts with the cytoplasmic domains of both cation-independent and cation-dependent MPRs, and is required for endosome-to-Golgi transport.

Immunogen: Fusion protein of human PLIN3

Applications: ELISA, WB, IHC

Recommended Dilutions: IHC: 25-100;WB: 500-2000;ELISA: 2000-5000

Host Species: Rabbit

Clonality: Rabbit Polyclonal

Isotype: Immunogen-specific rabbit IgG

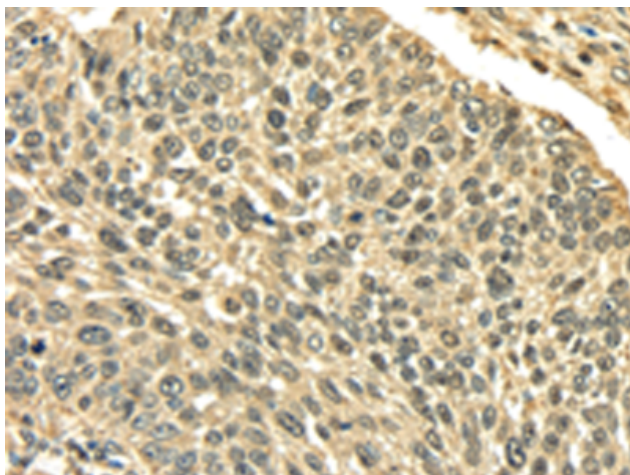
Purification: Antigen affinity purification

Species Reactivity: Human

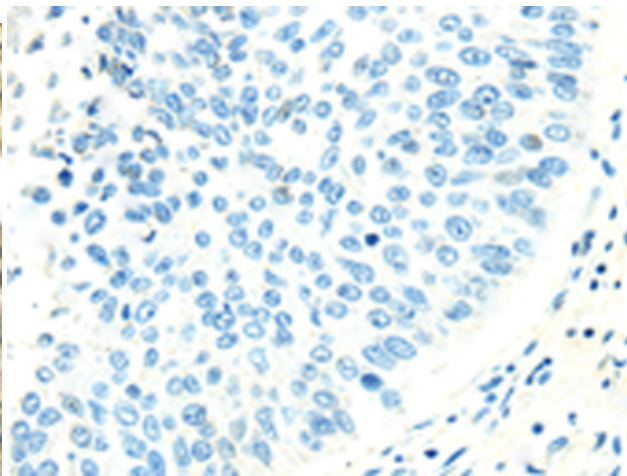
Constituents: PBS (without Mg²⁺ and Ca²⁺), pH 7.4, 150 mM NaCl, 0.05% Sodium Azide and 40% glycerol

Research Areas: Signal Transduction

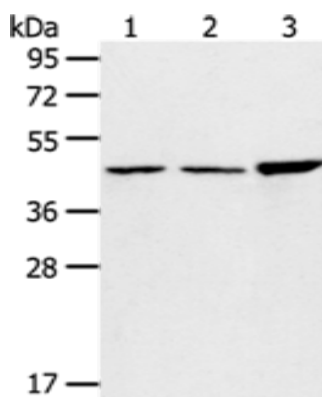
Storage & Shipping: Store at -20°C. Avoid repeated freezing and thawing



Immunohistochemistry analysis of paraffin embedded Human lung cancer tissue using 217910 (PLIN3 Antibody) at a dilution of 1/35 (Cytoplasm and Nucleus).



In comparison with the IHC on the left, the same paraffin-embedded Human lung cancer tissue is first treated with the fusion protein and then with 217910 (Anti-PLIN3 Antibody) at dilution 1/35.



Gel: 8% SDS-PAGE, Lysate: 40 μ g;
Lane 1-3: 293T cells, 231 cells, Hela cells;
Primary antibody: 217910 (PLIN3 Antibody) at dilution 1/800;
Secondary antibody: Goat anti rabbit IgG at 1/8000 dilution;
Exposure time: 3 seconds