

## PLIN1 RABBIT PAB

**Cat.#:** S220797

**Product Name:** Anti-PLIN1 Rabbit Polyclonal Antibody

**Synonyms:** PERI; PLIN; FPLD4

**UNIPROT ID:** O60240 (Gene Accession - NP\_002657)

**Background:** The protein encoded by this gene coats lipid storage droplets in adipocytes, thereby protecting them until they can be broken down by hormone-sensitive lipase. The encoded protein is the major cAMP-dependent protein kinase substrate in adipocytes and, when unphosphorylated, may play a role in the inhibition of lipolysis. Alternatively spliced transcript variants varying in the 5' UTR, but encoding the same protein, have been found for this gene.

**Immunogen:** Synthetic peptide of human PLIN1

**Applications:** ELISA, IHC

**Recommended Dilutions:** IHC: 25-100; ELISA: 1000-2000

**Host Species:** Rabbit

**Clonality:** Rabbit Polyclonal

**Isotype:** Immunogen-specific rabbit IgG

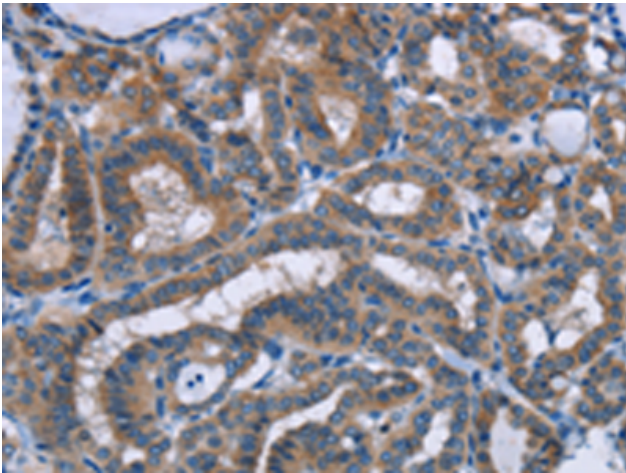
**Purification:** Antigen affinity purification

**Species Reactivity:** Human, Mouse, Rat

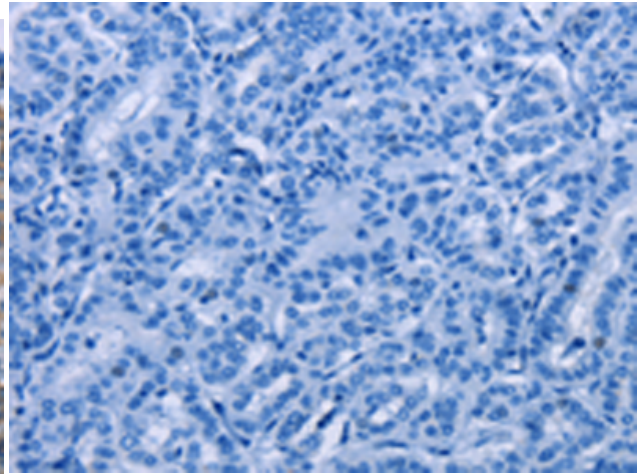
**Constituents:** PBS (without Mg<sup>2+</sup> and Ca<sup>2+</sup>), pH 7.4, 150 mM NaCl, 0.05% Sodium Azide and 40% glycerol

**Research Areas:** Metabolism, Cancer, Cardiovascular

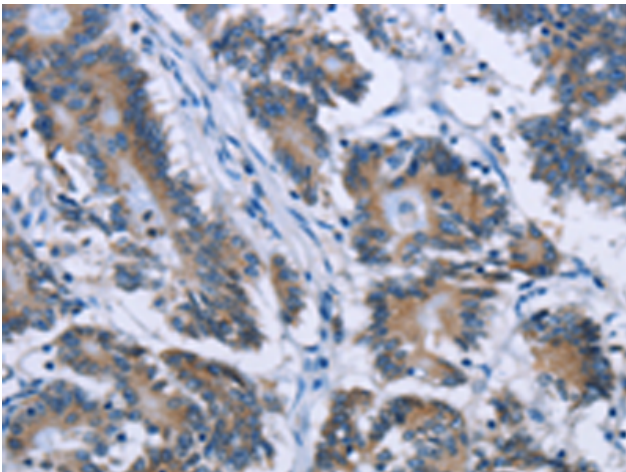
**Storage & Shipping:** Store at -20°C. Avoid repeated freezing and thawing



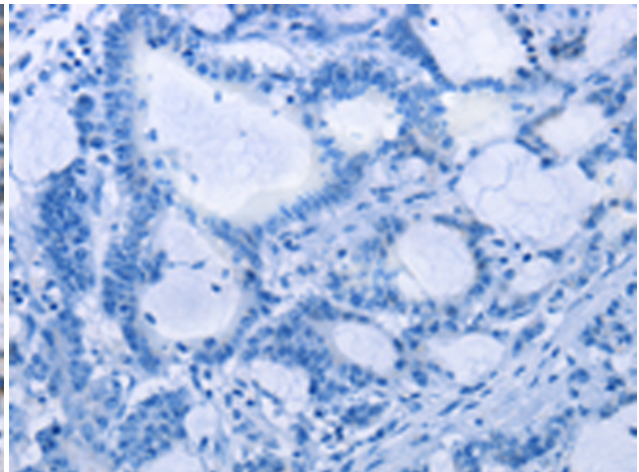
Immunohistochemistry analysis of paraffin embedded Human thyroid cancer tissue using 220797 (PLINI Antibody) at a dilution of 1/30 (Cytoplasm).



In comparison with the IHC on the left, the same paraffin-embedded Human thyroid cancer tissue is first treated with the synthetic peptide and then with 220797 (Anti-PLINI Antibody) at dilution 1/30.



The image on the left is immunohistochemistry of paraffin-embedded Human colon cancer tissue using 220797 (Anti-PLINI Antibody) at a dilution of 1/30.



In comparison with the IHC on the left, the same paraffin-embedded Human colon cancer tissue is first treated with synthetic peptide and then with D262037 (Anti-PLINI Antibody) at dilution 1/30.