

PLGLB2 RABBIT PAB

Cat.#: S218790

Product Name: Anti-PLGLB2 Rabbit Polyclonal Antibody

Synonyms: PLGP1

UNIPROT ID: Q02325 (Gene Accession - BC005379)

Background: Cleavage of the serine proteinase plasminogen to form plasmin is the central event in the dissolution of blood clots by the fibrinolytic system. Within the fibrinolytic cascade, the serine proteinases urokinase-type plasminogen activator (uPA) and tissue-type plasminogen activator (tPA) activate the proenzyme plasminogen by cleaving plasminogen to form the fibrinolytically active enzyme plasmin. PLGLB2 (plasminogen-like B2), also known as PLGP1, is a 96 amino acid protein that resembles the N-terminal plasminogen activation peptide, which is released from plasminogen during conversion to plasmin. PLGLB2 may bind to lysine binding sites present in the kringle structures of plasminogen, an event that interferes with the binding of fibrin or α -2 antiplasmin to plasminogen and may result in the localization of activity at sites necessary for extracellular matrix destruction.

Immunogen: Fusion protein of human PLGLB2

Applications: ELISA, IHC

Recommended Dilutions: IHC: 50-300; ELISA: 5000-10000

Host Species: Rabbit

Clonality: Rabbit Polyclonal

Isotype: Immunogen-specific rabbit IgG

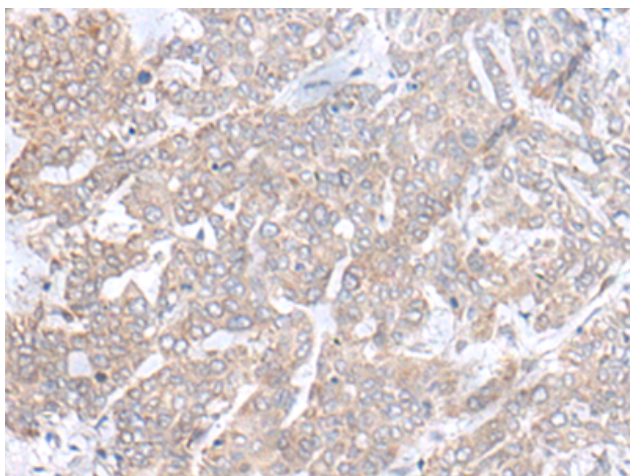
Purification: Antigen affinity purification

Species Reactivity: Human

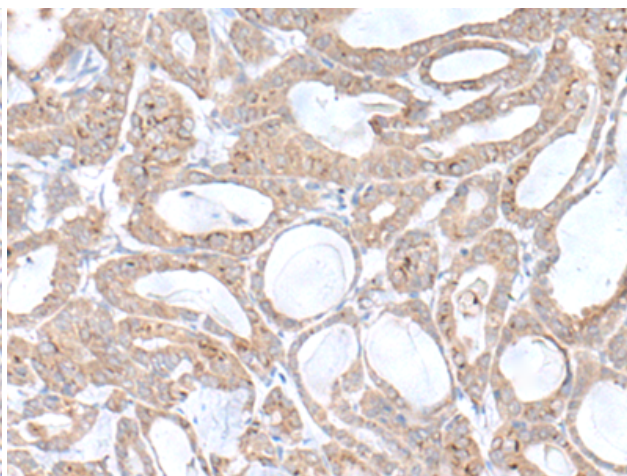
Constituents: PBS (without Mg²⁺ and Ca²⁺), pH 7.4, 150 mM NaCl, 0.05% Sodium Azide and 40% glycerol

Research Areas: Signal Transduction, Immunology

Storage & Shipping: Store at -20°C. Avoid repeated freezing and thawing



Immunohistochemistry analysis of paraffin-embedded Human liver cancer tissue using 218790(PLGLB2 Antibody) at a dilution of 1/65(Secreted).



Immunohistochemistry analysis of paraffin-embedded Human thyroid cancer tissue using 218790(Anti-PLGLB2 Antibody) at a dilution of 1/65.



Product Description

Pioneering GTPase and Oncogene Product Development since 2010
