

PLEKHF2 RABBIT PAB

Cat.#: S219286

Product Name: Anti-PLEKHF2 Rabbit Polyclonal Antibody

Synonyms: EAPF; PHAFIN2; ZFYVE18

UNIPROT ID: Q9H8W4 (Gene Accession - BC011806)

Background: May play a role in early endosome fusion upstream of RAB5, hence regulating receptor trafficking and fluid-phase transport. Enhances cellular sensitivity to TNF-induced apoptosis (PubMed:18288467).

Immunogen: Fusion protein of human PLEKHF2

Applications: ELISA, WB, IHC

Recommended Dilutions: IHC: 100-300;WB: 1000-5000;ELISA: 5000-10000

Host Species: Rabbit

Clonality: Rabbit Polyclonal

Isotype: Immunogen-specific rabbit IgG

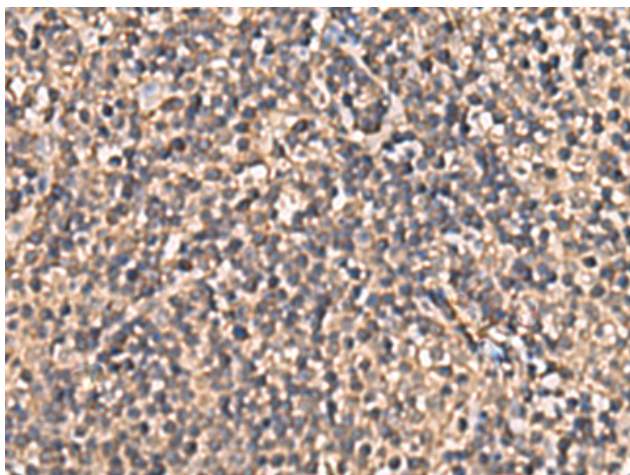
Purification: Antigen affinity purification

Species Reactivity: Human, Mouse

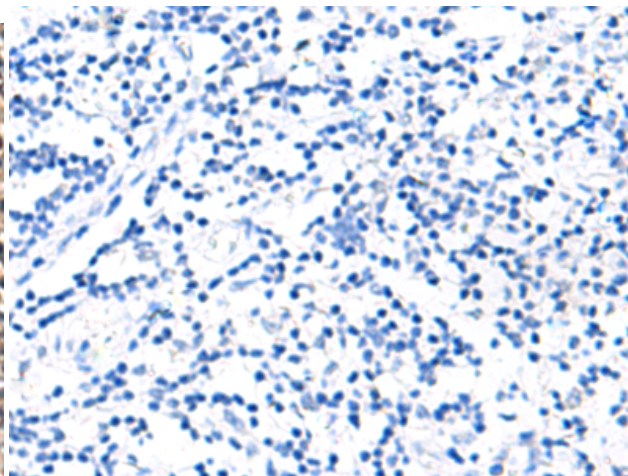
Constituents: PBS (without Mg²⁺ and Ca²⁺), pH 7.4, 150 mM NaCl, 0.05% Sodium Azide and 40% glycerol

Research Areas: Cell Biology

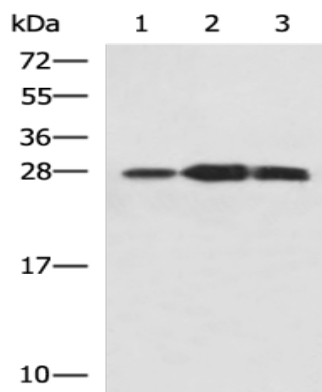
Storage & Shipping: Store at -20°C. Avoid repeated freezing and thawing



Immunohistochemistry analysis of paraffin embedded Human tonsil tissue using 219286(PLEKHF2 Antibody) at a dilution of 1/90(Cytoplasm).



In comparison with the IHC on the left, the same paraffin-embedded Human tonsil tissue is first treated with the fusion protein and then with 219286(Anti-PLEKHF2 Antibody) at dilution 1/90.



Gel: 12%SDS-PAGE, Lysate: 40 µg;
Lane 1-3: Mouse kidney tissue, Raji and Jurkat cell lysates;
Primary antibody: 219286(PLEKHF2 Antibody) at dilution 1/1400;
Secondary antibody: HRP-conjugated Goat anti rabbit IgG at 1/5000 dilution;
Exposure time: 1 minute