

PLCL2 RABBIT PAB

Cat.#: S218939

Product Name: Anti-PLCL2 Rabbit Polyclonal Antibody

Synonyms: PLCE2

UNIPROT ID: Q9UPR0 (Gene Accession - BC036392)

Background: May play an role in the regulation of Ins(1,4,5)P3 around the endoplasmic reticulum.

Immunogen: Fusion protein of human PLCL2

Applications: ELISA, IHC

Recommended Dilutions: IHC: 25-100; ELISA: 5000-10000

Host Species: Rabbit

Clonality: Rabbit Polyclonal

Isotype: Immunogen-specific rabbit IgG

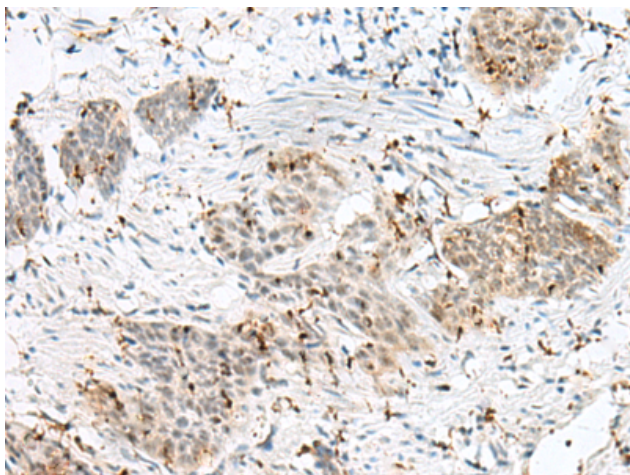
Purification: Antigen affinity purification

Species Reactivity: Human, Mouse

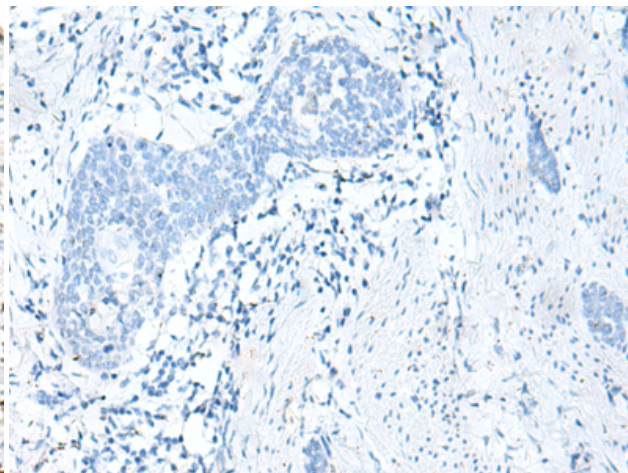
Constituents: PBS (without Mg²⁺ and Ca²⁺), pH 7.4, 150 mM NaCl, 0.05% Sodium Azide and 40% glycerol

Research Areas: Signal Transduction

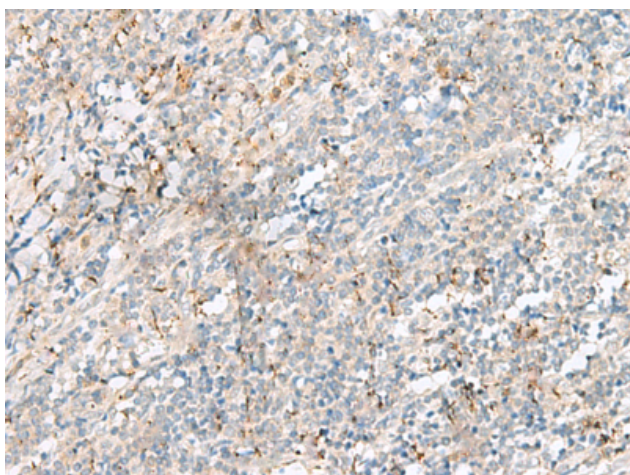
Storage & Shipping: Store at -20°C. Avoid repeated freezing and thawing



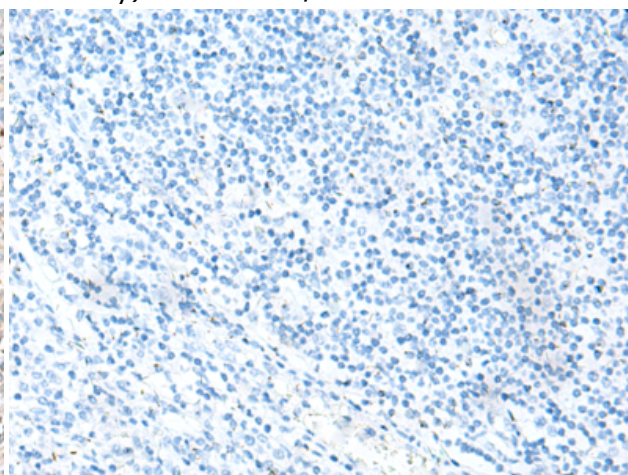
Immunohistochemistry analysis of paraffin embedded Human esophagus cancer tissue using 218939(PLCL2 Antibody) at a dilution of 1/50(Nucleus or Cytoplasm).



In comparison with the IHC on the left, the same paraffin-embedded Human esophagus cancer tissue is first treated with the fusion protein and then with 218939(Anti-PLCL2 Antibody) at dilution 1/50.



The image on the left is immunohistochemistry of paraffin-embedded Human tonsil tissue using 218939(Anti-PLCL2 Antibody) at a dilution of 1/50.



In comparison with the IHC on the left, the same paraffin-embedded Human tonsil tissue is first treated with fusion protein and then with D225544(Anti-PLCL2 Antibody) at dilution 1/50.