

PLASMINOGEN RECEPTOR RABBIT PAB

Cat.#: N225210

Product Name: Anti-Plasminogen Receptor Rabbit pAb

Synonyms: Plasminogen receptor (KT; Plg-R(KT))

UNIPROT ID: Q9HBL7

Background: Receptor for plasminogen.

Immunogen: The antiserum was produced against synthesized peptide derived from the Internal region of human PLGRKT. AA range:1-50

Applications: WB,ELISA

Recommended Dilutions: WB: 1/500-1/1000 ELISA: 1/10000

Host Species: Rabbit

Clonality: Rabbit Polyclonal

Clone ID: -

MW: Calculated MW: 17 kDa; Observed MW: 17 kDa

Isotype: IgG

Purification: Affinity Purified

Species Reactivity: Human,Rat

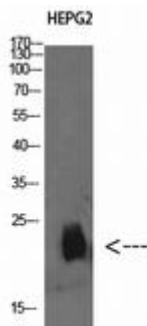
Conjugation: Unconjugated

Modification: Unmodified

Constituents: PBS (without Mg²⁺ and Ca²⁺), pH 7.3 containing 50% glycerol, 0.5% BSA and 0.02% sodium azide

Research Areas: -

Storage & Shipping: Store at -20°C. Avoid repeated freezing and thawing



Western blot analysis of Plasminogen Receptor in HEPG2 lysates using Plasminogen Receptor antibody.



Product Description

Pioneering GTPase and Oncogene Product Development since 2010
