

PLAGL2 RABBIT PAB

Cat.#: S214581

Product Name: Anti-PLAGL2 Rabbit Polyclonal Antibody

Synonyms: ZNF900

UNIPROT ID: Q9UPG8 (Gene Accession - NP_002648)

Background: Pleiomorphic adenoma gene-like 2 is a zinc-finger protein that recognizes DNA and/or RNA.

Immunogen: Synthetic peptide of human PLAGL2

Applications: ELISA, IHC

Recommended Dilutions: IHC: 25-100; ELISA: 2000-5000

Host Species: Rabbit

Clonality: Rabbit Polyclonal

Isotype: Immunogen-specific rabbit IgG

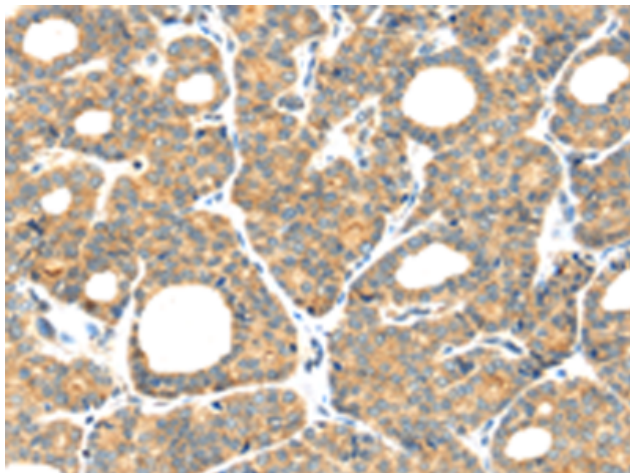
Purification: Antigen affinity purification

Species Reactivity: Human

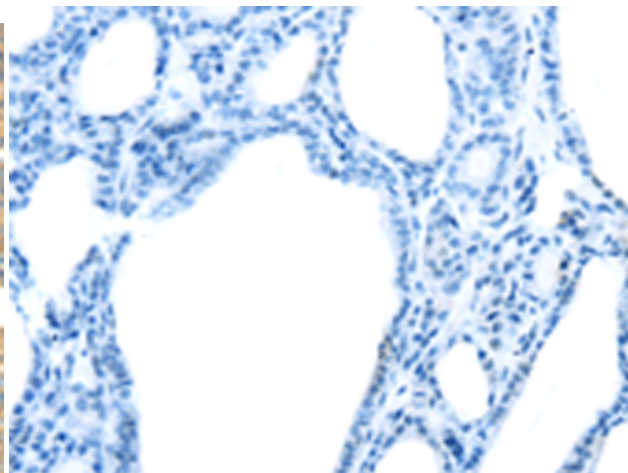
Constituents: PBS (without Mg²⁺ and Ca²⁺), pH 7.4, 150 mM NaCl, 0.05% Sodium Azide and 40% glycerol

Research Areas: Epigenetics and Nuclear Signaling

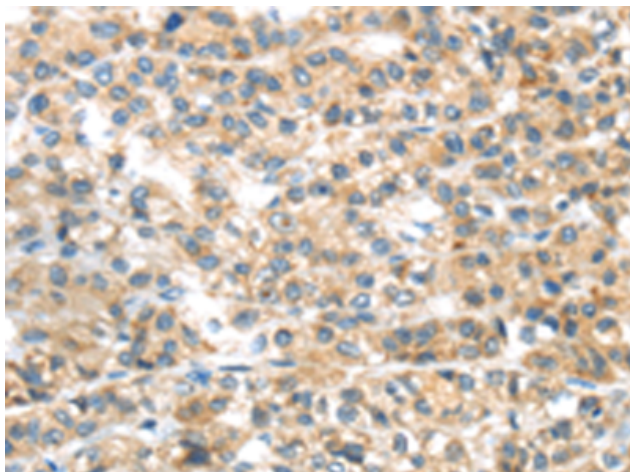
Storage & Shipping: Store at -20°C. Avoid repeated freezing and thawing



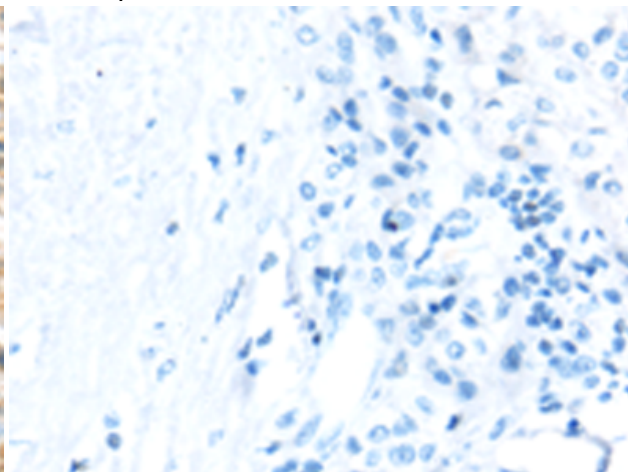
Immunohistochemistry analysis of paraffin embedded Human thyroid cancer tissue using 214581(PLAGL2 Antibody) at a dilution of 1/30(Cytoplasm).



In comparison with the IHC on the left, the same paraffin-embedded Human thyroid cancer tissue is first treated with the synthetic peptide and then with 214581(Anti-PLAGL2 Antibody) at dilution 1/30.



The image on the left is immunohistochemistry of paraffin-embedded Human liver cancer tissue using 214581(Anti-PLAGL2 Antibody) at a dilution of 1/30.



In comparison with the IHC on the left, the same paraffin-embedded Human liver cancer tissue is first treated with synthetic peptide and then with D162056(Anti-PLAGL2 Antibody) at dilution 1/30.