

PLACENTAL ALKALINE PHOSPHATASE MOUSE MAB

Cat.#: N261197

Product Name: Anti-Placental Alkaline Phosphatase Mouse Monoclonal Antibody

Synonyms: ALPP; PLAP; Alkaline phosphatase; placental type; Alkaline phosphatase Regan isozyme; Placental alkaline phosphatase I; PLAP-1

UNIPROT ID: P05187

Background: PLAP may assist in guiding migratory cells and transporting specific molecules, such as fatty acids and immunoglobulins, across the plasma membrane. The three tissue-specific APs identified in human, PLAP, germ cell AP (GCAP) and intestinal AP, are 90-98% homologous and their genes are clustered on chromosome 2q.

Immunogen: Purified recombinant fragment of human ALPP expressed in E. Coli.

Applications: WB,IHC-P

Recommended Dilutions: WB: 1/500-1/1000 IHC: 1/50-1/100

Host Species: Mouse

Clonality: Mouse Monoclonal

Clone ID: 3C11-E7-A1

MW: Calculated MW: 58 kDa; Observed MW: 70 kDa

Isotype: IgG2b

Purification: Ascitic Fluid

Species Reactivity: Human

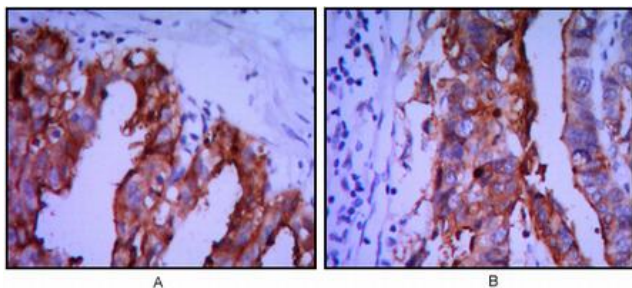
Conjugation: Unconjugated

Modification: Unmodified

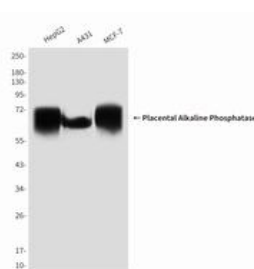
Constituents: PBS (without Mg²⁺ and Ca²⁺), pH 7.3 containing 50% glycerol, 0.5% BSA and 0.02% sodium azide

Research Areas: Tags & Cell Markers

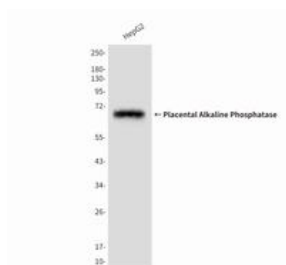
Storage & Shipping: Store at -20°C. Avoid repeated freezing and thawing



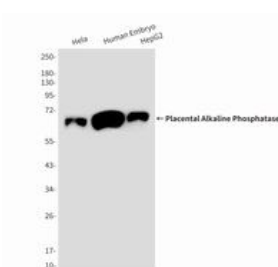
Immunohistochemical analysis of paraffin-embedded Human tonsils using Placental Alkaline Phosphatase antibody, with DAB staining. High-pressure and temperature Sodium Citrate pH 6.0 was used for antigen retrieval.



Western blot analysis of Placental Alkaline Phosphatase in HepG2, A431 and MCF-7 lysates using Placental Alkaline Phosphatase antibody.



Western blot analysis of Placental Alkaline Phosphatase in HepG2 lysates using Placental Alkaline Phosphatase antibody



Western blot analysis of Placental Alkaline Phosphatase in HeLa, Human Embryo, HepG2 lysates using Placental Alkaline Phosphatase antibody.