

## PLAAT2 RABBIT PAB

**Cat.#:** S220606

**Product Name:** Anti-PLAAT2 Rabbit Polyclonal Antibody

**Synonyms:** HRASLS2; PLAAT-2; PLA1/2-2

**UNIPROT ID:** Q9NWW9 (Gene Accession - NP\_060348 )

**Background:** The protein encoded by this gene has both phospholipase and acyltransferase activities and acts as a tumor suppressor. The encoded protein can hydrolyze dipalmitoylated phosphatidylcholine (PC) to palmitic acid and lyso-PC. In addition, this protein can catalyze the N-acylation of phosphatidylethanolamine and can catalyze the O-acylation of lyso-PC to form PC. [provided by RefSeq, Jul 2016]

**Immunogen:** Synthetic peptide of human PLAAT2

**Applications:** ELISA, WB, IHC

**Recommended Dilutions:** IHC: 100-300;WB: 200-1000;ELISA: 2000-10000

**Host Species:** Rabbit

**Clonality:** Rabbit Polyclonal

**Isotype:** Immunogen-specific rabbit IgG

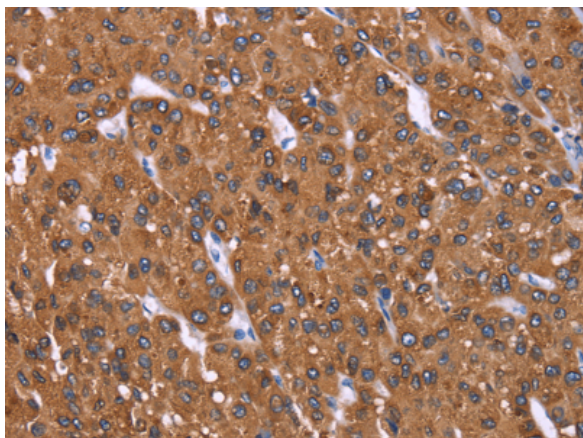
**Purification:** Antigen affinity purification

**Species Reactivity:** Human

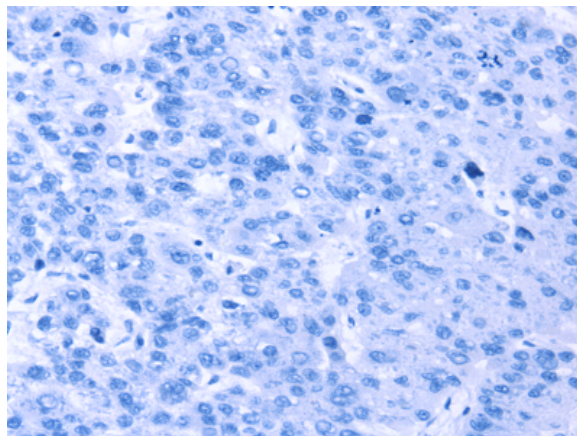
**Constituents:** PBS (without Mg<sup>2+</sup> and Ca<sup>2+</sup>), pH 7.4, 150 mM NaCl, 0.05% Sodium Azide and 40% glycerol

**Research Areas:** Cancer

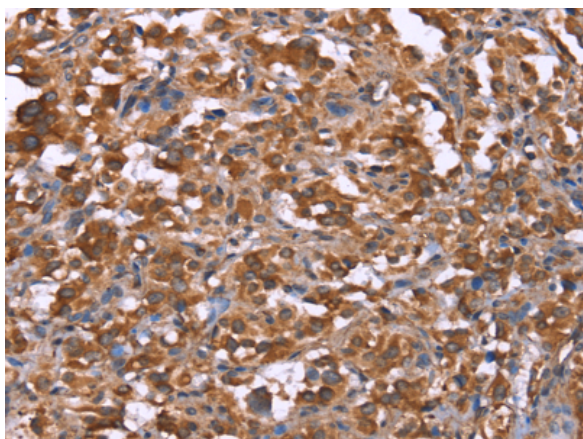
**Storage & Shipping:** Store at -20°C. Avoid repeated freezing and thawing



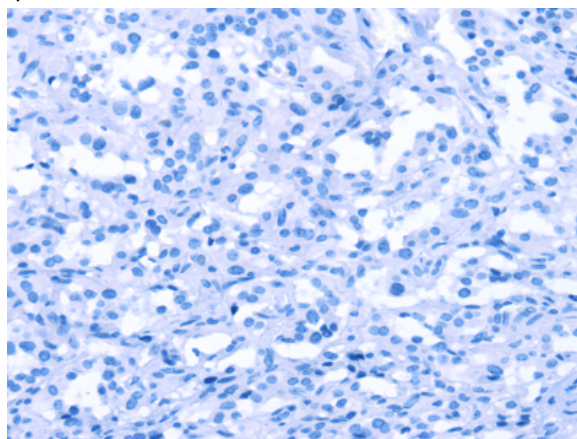
Immunohistochemistry analysis of paraffin embedded Human liver cancer tissue using 220606(PLAAT2 Antibody) at a dilution of 1/40(Cytoplasm).



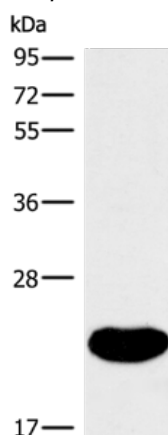
In comparison with the IHC on the left, the same paraffin-embedded Human liver cancer tissue is first treated with the synthetic peptide and then with 220606(Anti-PLAAT2 Antibody) at dilution 1/40.



The image on the left is immunohistochemistry of paraffin-embedded Human thyroid cancer tissue using 220606(Anti-PLAAT2 Antibody) at a dilution of 1/40.



In comparison with the IHC on the left, the same paraffin-embedded Human thyroid cancer tissue is first treated with synthetic peptide and then with D261756(Anti-PLAAT2 Antibody) at dilution 1/40.



Gel: 10%SDS-PAGE, Lysate: 40 µg;  
Lane: Human fetal liver tissue;  
Primary antibody: 220606(PLAAT2 Antibody) at dilution 1/362.5;  
Secondary antibody: Goat anti rabbit IgG at 1/8000 dilution;  
Exposure time: 40 seconds



# Product Description

Pioneering GTPase and Oncogene Product Development since 2010

---