

PLA2G4B RABBIT PAB

Cat.#: S214254

Product Name: Anti-PLA2G4B Rabbit Polyclonal Antibody

Synonyms: HsT16992; cPLA2-beta

UNIPROT ID: P0C869 (Gene Accession - NP_001108105)

Background: This gene encodes a member of the cytosolic phospholipase A2 protein family. Phospholipase A2 enzymes hydrolyze the sn-2 bond of phospholipids, releasing lysophospholipids and fatty acids. This enzyme may be associated with mitochondria and early endosomes. Most tissues also express read-through transcripts from the upstream gene into this gene, some of which may encode fusion proteins combining the N-terminus of the upstream gene including its JmjC domain with the almost complete coding region of this gene, including the C2 and cytoplasmic phospholipase A2 domains.

Immunogen: Synthetic peptide of human PLA2G4B

Applications: ELISA, WB, IHC

Recommended Dilutions: IHC: 50-100;WB: 500-2000;ELISA: 5000-10000

Host Species: Rabbit

Clonality: Rabbit Polyclonal

Isotype: Immunogen-specific rabbit IgG

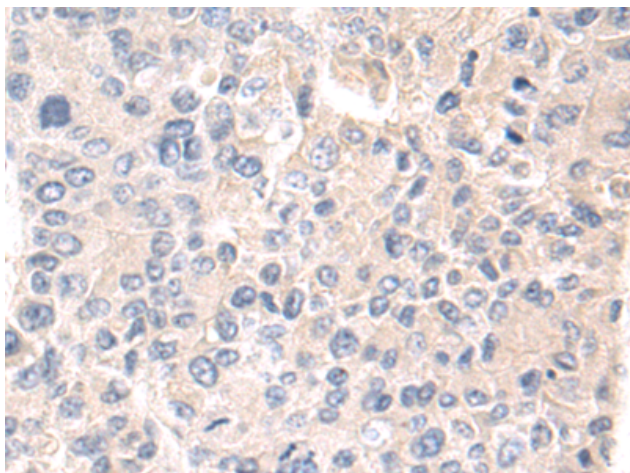
Purification: Antigen affinity purification

Species Reactivity: Human, Mouse

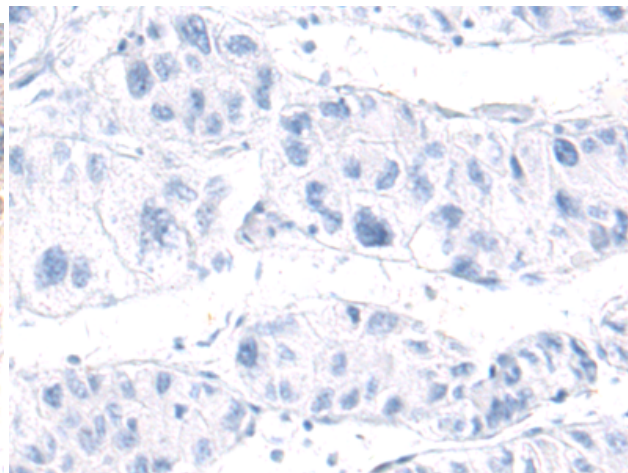
Constituents: PBS (without Mg²⁺ and Ca²⁺), pH 7.4, 150 mM NaCl, 0.05% Sodium Azide and 40% glycerol

Research Areas: Metabolism, Signal Transduction, Immunology

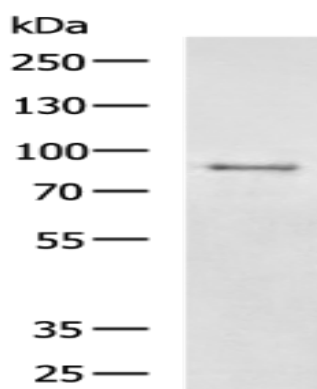
Storage & Shipping: Store at -20°C. Avoid repeated freezing and thawing



Immunohistochemistry analysis of paraffin embedded Human liver cancer tissue using 214254(PLA2G4B Antibody) at a dilution of 1/50(Cytoplasm).



In comparison with the IHC on the left, the same paraffin-embedded Human liver cancer tissue is first treated with the synthetic peptide and then with 214254(Anti-PLA2G4B Antibody) at dilution 1/50.



Gel: 6%SDS-PAGE, Lysate: 40 μ g;
Lane: BGC-823 cell lysate;
Primary antibody: 214254(PLA2G4B Antibody)
at dilution 1/900;
Secondary antibody: HRP-conjugated Goat
anti rabbit IgG at 1/5000 dilution;
Exposure time: 5 minutes