

## PLA2G15 RABBIT PAB

**Cat.#:** S219309

**Product Name:** Anti-PLA2G15 Rabbit Polyclonal Antibody

**Synonyms:** ACS; LLPL; LPLA2; LYPLA3; GXVPLA2

**UNIPROT ID:** Q8NCC3 (Gene Accession - BC011640 )

**Background:** Lysophospholipases are enzymes that act on biological membranes to regulate the multifunctional lysophospholipids. The protein encoded by this gene hydrolyzes lysophosphatidylcholine to glycerophosphorylcholine and a free fatty acid. This enzyme is present in the plasma and thought to be associated with high-density lipoprotein. A later paper contradicts the function of this gene. It demonstrates that this gene encodes a lysosomal enzyme instead of a lysophospholipase and has both calcium-independent phospholipase A2 and transacylase activities.

**Immunogen:** Fusion protein of human PLA2G15

**Applications:** ELISA, IHC

**Recommended Dilutions:** IHC: 50-200; ELISA: 5000-10000

**Host Species:** Rabbit

**Clonality:** Rabbit Polyclonal

**Isotype:** Immunogen-specific rabbit IgG

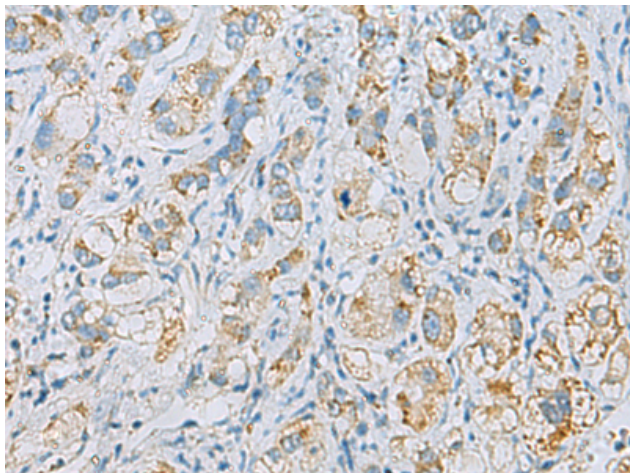
**Purification:** Antigen affinity purification

**Species Reactivity:** Human, Mouse, Rat

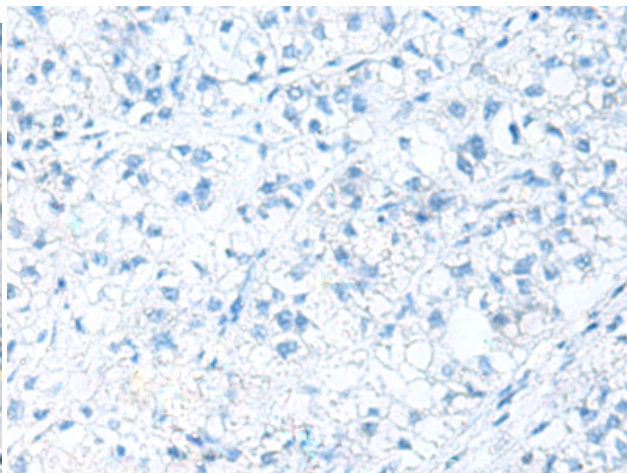
**Constituents:** PBS (without Mg<sup>2+</sup> and Ca<sup>2+</sup>), pH 7.4, 150 mM NaCl, 0.05% Sodium Azide and 40% glycerol

**Research Areas:** Metabolism, Signal Transduction, Epigenetics and Nuclear Signaling

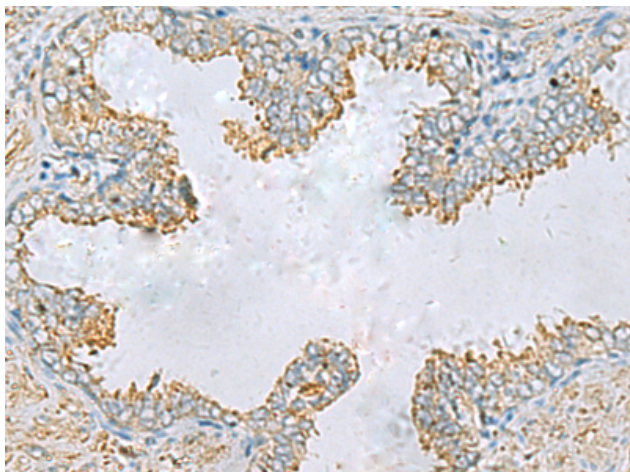
**Storage & Shipping:** Store at -20°C. Avoid repeated freezing and thawing



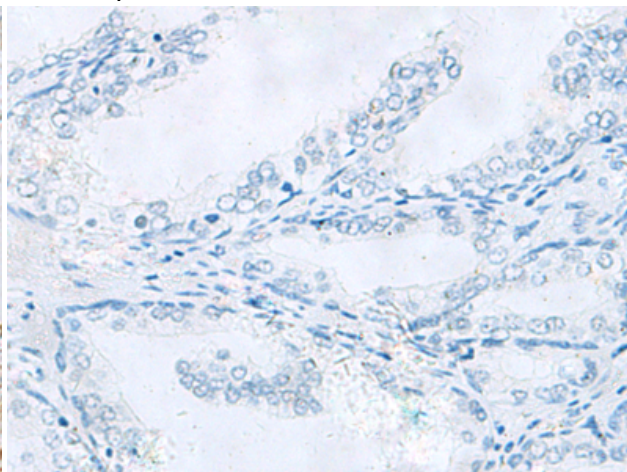
Immunohistochemistry analysis of paraffin embedded Human liver cancer tissue using 219309(PLA2G15 Antibody) at a dilution of 1/65(Cytoplasm).



In comparison with the IHC on the left, the same paraffin-embedded Human liver cancer tissue is first treated with the fusion protein and then with 219309(Anti-PLA2G15 Antibody) at dilution 1/65.



The image on the left is immunohistochemistry of paraffin-embedded Human prostate cancer tissue using 219309(Anti-PLA2G15 Antibody) at a dilution of 1/65.



In comparison with the IHC on the left, the same paraffin-embedded Human prostate cancer tissue is first treated with fusion protein and then with D226268(Anti-PLA2G15 Antibody) at dilution 1/65.