

PKM2 (1F2) MOUSE MAB

Cat.#: N261065

Product Name: Anti-PKM2 (1F2) Mouse Monoclonal Antibody

Synonyms: PKM; OIP3; PK2; PK3; PKM2; Pyruvate kinase isozymes M1/M2; Cytosolic thyroid hormone-binding protein; CTHBP; Opa-interacting protein 3; OIP-3; Pyruvate kinase 2/3; Pyruvate kinase muscle isozyme; Thyroid hormone-binding protein 1; THBP1; Tu

UNIPROT ID: P14618

Background: Pyruvate kinase is a glycolytic enzyme that catalyses the conversion of phosphoenolpyruvate to pyruvate. PKM2 is shown to be essential for aerobic glycolysis in tumors, known as the Warburg effect.

Immunogen: Purified recombinant human PKM2 protein fragments expressed in E.coli.

Applications: WB, ICC/IF, IP

Recommended Dilutions: WB: 1/500-1/1000 IF: 1/50-1/200 IP: 1/20

Host Species: Mouse

Clonality: Mouse Monoclonal

Clone ID: 1F2-F4-H11

MW: Calculated MW: 58 kDa; Observed MW: 58 kDa

Isotype: IgG2b

Purification: Affinity Purified

Species Reactivity: Human, Mouse, Monkey

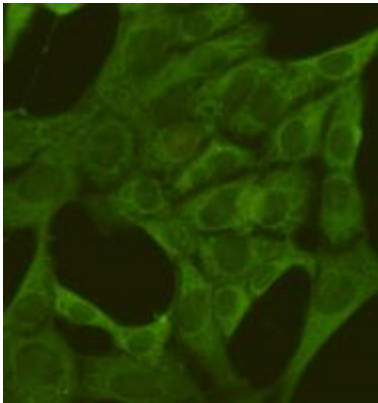
Conjugation: Unconjugated

Modification: Unmodified

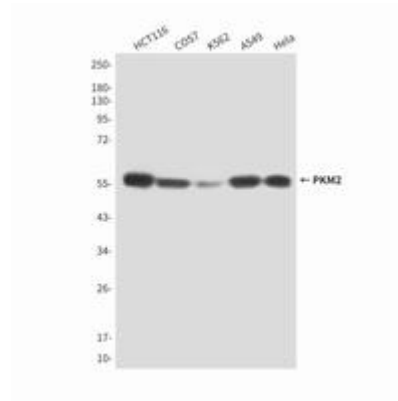
Constituents: PBS (without Mg²⁺ and Ca²⁺), pH 7.3 containing 50% glycerol, 0.5% BSA and 0.02% sodium azide

Research Areas: Signal Transduction

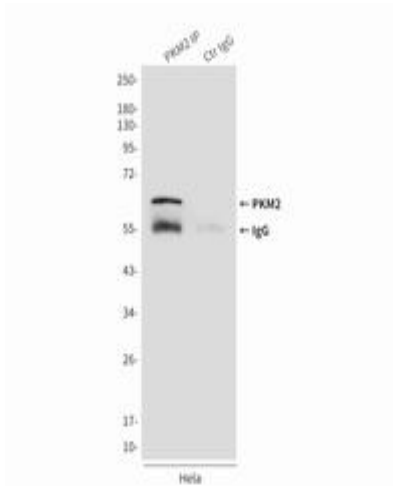
Storage & Shipping: Store at -20°C. Avoid repeated freezing and thawing



Immunofluorescence analysis of PKM2 (1F2) in 3T3 using PKM2 antibody.



Western blot analysis of PKM2 in HCT116, COS7, K562, A549 and Hela lysates using PKM2 antibody.



Immunoprecipitation analysis of PKM2 (1F2) in Hela lysates using PKM2 antibody.