

## PKD2L1 RABBIT PAB

**Cat.#:** S219968

**Product Name:** Anti-PKD2L1 Rabbit Polyclonal Antibody

**Synonyms:** PCL; PKDL; PKD2L; TRPP3

**UNIPROT ID:** Q9P0L9 (Gene Accession - NP\_057196 )

**Background:** This gene encodes a member of the polycystin protein family. The encoded protein contains multiple transmembrane domains, and cytoplasmic N- and C-termini. The protein may be an integral membrane protein involved in cell-cell/matrix interactions. This protein functions as a calcium-regulated nonselective cation channel. Two transcript variants encoding different isoforms have been found for this gene.

**Immunogen:** Synthetic peptide of human PKD2L1

**Applications:** ELISA, IHC

**Recommended Dilutions:** IHC: 20-100; ELISA: 2000-5000

**Host Species:** Rabbit

**Clonality:** Rabbit Polyclonal

**Isotype:** Immunogen-specific rabbit IgG

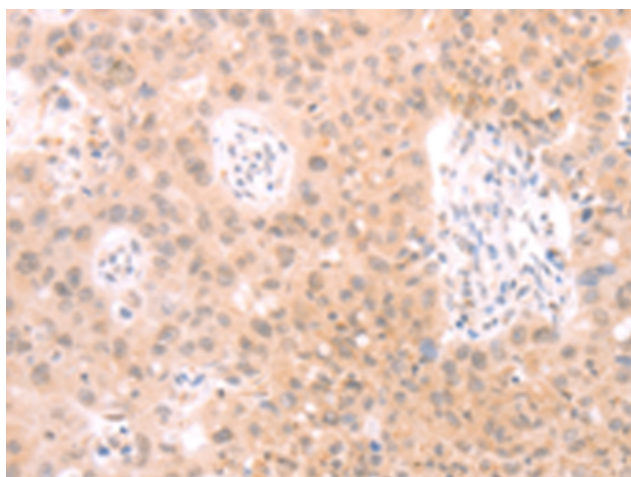
**Purification:** Antigen affinity purification

**Species Reactivity:** Human

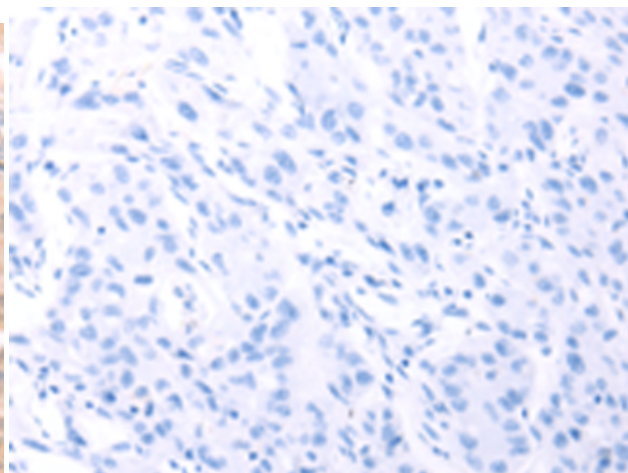
**Constituents:** PBS (without Mg<sup>2+</sup> and Ca<sup>2+</sup>), pH 7.4, 150 mM NaCl, 0.05% Sodium Azide and 40% glycerol

**Research Areas:** Signal Transduction

**Storage & Shipping:** Store at -20°C. Avoid repeated freezing and thawing



Immunohistochemistry analysis of paraffin embedded Human lung cancer tissue using 219968(PKD2L1 Antibody) at a dilution of 1/25(Cytoplasm).



In comparison with the IHC on the left, the same paraffin-embedded Human lung cancer tissue is first treated with the synthetic peptide and then with 219968(Anti-PKD2L1 Antibody) at dilution 1/25.