

## PKC DELTA RABBIT MAB

**Cat.#:** N262726

**Product Name:** Anti-PKC delta Rabbit Monoclonal Antibody

**Synonyms:** Pkcd; PKC[d]; A1385711; PKCdelta; D14Ert420e

**UNIPROT ID:** P28867

**Background:** Calcium-independent, phospholipid- and diacylglycerol (DAG)-dependent serine/threonine-protein kinase that plays contrasting roles in cell death and cell survival by functioning as a pro-apoptotic protein during DNA damage-induced apoptosis, but acting as an anti-apoptotic protein during cytokine receptor-initiated cell death, is involved in tumor suppression, is required for oxygen radical production by NADPH oxidase and acts as positive or negative regulator in platelet functional responses.

**Immunogen:** Recombinant protein of mouse PKC delta

**Applications:** WB,IHC-F,IHC-P,ICC/IF

**Recommended Dilutions:** WB: 1/500-1/1000 IHC: 1/50-1/100 IF: 1/50-1/200

**Host Species:** Rabbit

**Clonality:** Rabbit Monoclonal

**Clone ID:** R09-8H6

**MW:** Calculated MW: 78 kDa; Observed MW: 78 kDa

**Isotype:** IgG

**Purification:** Affinity Purified

**Species Reactivity:** Human,Mouse,Rat

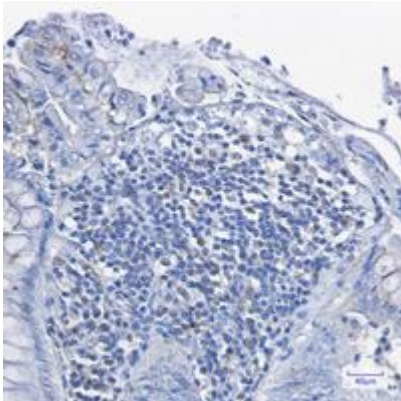
**Conjugation:** Unconjugated

**Modification:** Unmodified

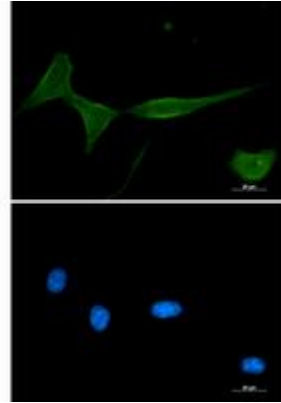
**Constituents:** PBS (without Mg<sup>2+</sup> and Ca<sup>2+</sup>), pH 7.3 containing 50% glycerol, 0.5% BSA and 0.02% sodium azide

**Research Areas:** Signal Transduction

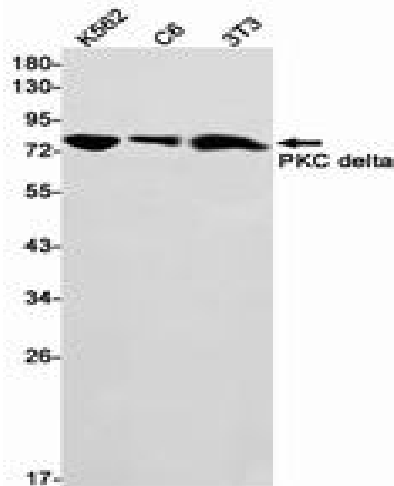
**Storage & Shipping:** Store at -20°C. Avoid repeated freezing and thawing



Immunohistochemistry analysis of paraffin-embedded Human colon cancer tissue using PKC delta antibody. High-pressure and temperature Sodium Citrate pH 6.0 was used for antigen retrieval.



Immunocytochemistry analysis of PKC delta (green) in 3T3 using PKC delta antibody, and DAPI (blue).



Western blot analysis of PKC delta in K562, C6, 3T3 lysates using PKC delta antibody.