

## PKA RII BETA RABBIT PAB

**Cat.#:** N225813

**Product Name:** Anti-PKA RII beta Rabbit pAb

**Synonyms:** A1451071; cAMP dependent protein kinase type II beta regulatory chain; Pkarb2; PRKAR2B; Protein kinase cAMP dependent regulatory type II beta; RATDNA; RII beta

**UNIPROT ID:** P31323

**Background:** Regulatory subunit of the cAMP-dependent protein kinases involved in cAMP signaling in cells. Type II regulatory chains mediate membrane association by binding to anchoring proteins, including the MAP2 kinase.

**Immunogen:** A synthesized peptide derived from human PKA 2 beta

**Applications:** WB,IHC-P,ICC/IF,IP,FC

**Recommended Dilutions:** WB: 1/500-1/1000 IHC: 1/50-1/100 IF: 1/50-1/200 IP: 1/20 FC: 1/50-1/100

**Host Species:** Rabbit

**Clonality:** Rabbit Polyclonal

**Clone ID:** -

**MW:** Calculated MW: 46 kDa; Observed MW: 46 kDa

**Isotype:** IgG

**Purification:** Affinity Chromatography

**Species Reactivity:** Human,Mouse,Rat

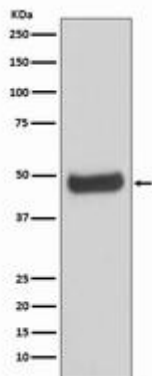
**Conjugation:** Unconjugated

**Modification:** Unmodified

**Constituents:** PBS (without Mg<sup>2+</sup> and Ca<sup>2+</sup>), pH 7.3 containing 50% glycerol, 0.5% BSA and 0.02% sodium azide

**Research Areas:** Signal Transduction

**Storage & Shipping:** Store at -20°C. Avoid repeated freezing and thawing



Western blot analysis of PKA 2 beta in Human fetal brain lysates using PKA RII beta antibody.