

PIWIL4 RABBIT PAB

Cat.#: S216730

Product Name: Anti-PIWIL4 Rabbit Polyclonal Antibody

Synonyms: HIWI2, MIWI2

UNIPROT ID: Q7Z3Z4 (Gene Accession - BC031060)

Background: PIWIL4 belongs to the Argonaute family of proteins, which function in development and maintenance of germline stem cells. It plays a central role during spermatogenesis by repressing transposable elements and prevent their mobilization, which is essential for the germline integrity. May be involved in the chromatin-modifying pathway by inducing 'Lys-9' methylation of histone H3 at some loci.

Immunogen: Fusion protein of human PIWIL4

Applications: ELISA, IHC

Recommended Dilutions: IHC: 50-200; ELISA: 2000-5000

Host Species: Rabbit

Clonality: Rabbit Polyclonal

Isotype: Immunogen-specific rabbit IgG

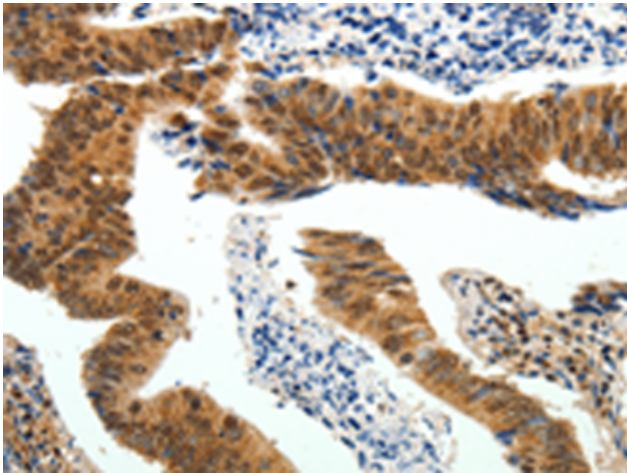
Purification: Antigen affinity purification

Species Reactivity: Human, Mouse, Rat

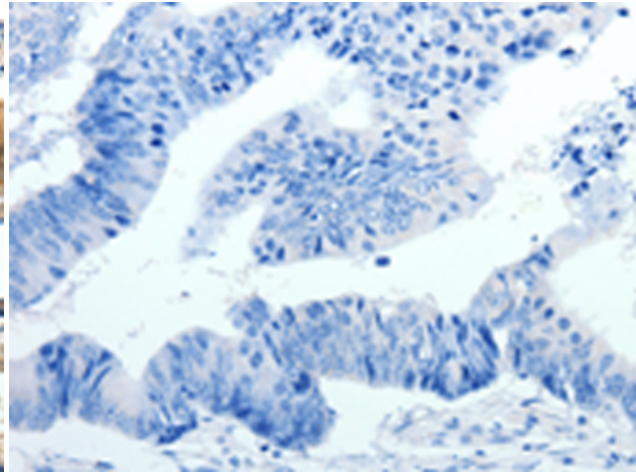
Constituents: PBS (without Mg²⁺ and Ca²⁺), pH 7.4, 150 mM NaCl, 0.05% Sodium Azide and 40% glycerol

Research Areas: Epigenetics and Nuclear Signaling

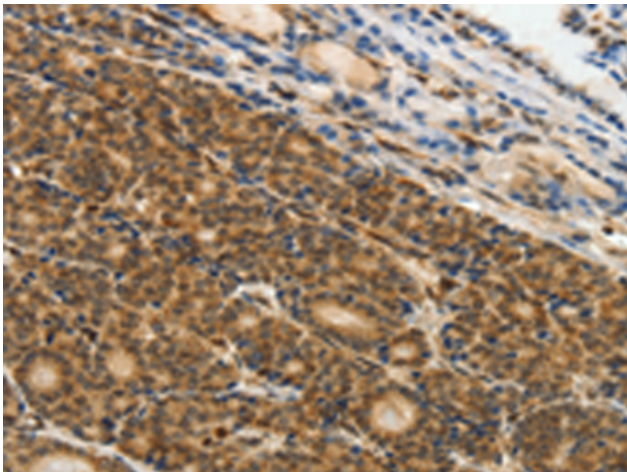
Storage & Shipping: Store at -20°C. Avoid repeated freezing and thawing



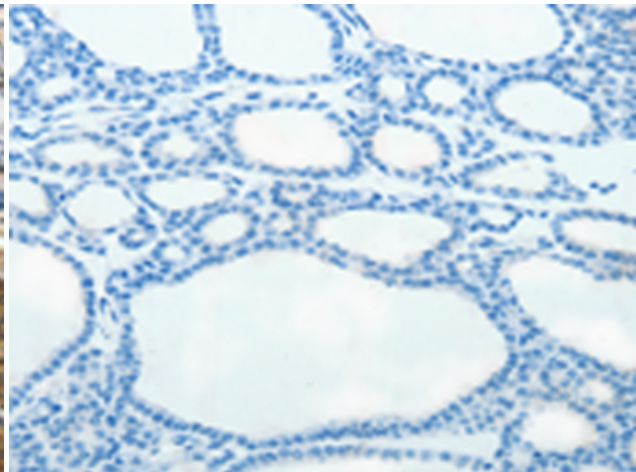
Immunohistochemistry analysis of paraffin embedded Human colon cancer tissue using 216730(PIWIL4 Antibody) at a dilution of 1/25(Cytoplasm, Nucleus).



In comparison with the IHC on the left, the same paraffin-embedded Human colon cancer tissue is first treated with the fusion protein and then with 216730(Anti-PIWIL4 Antibody) at dilution 1/25.



The image on the left is immunohistochemistry of paraffin-embedded Human thyroid cancer tissue using 216730(Anti-PIWIL4 Antibody) at a dilution of 1/25.



In comparison with the IHC on the left, the same paraffin-embedded Human thyroid cancer tissue is first treated with fusion protein and then with D221135(Anti-PIWIL4 Antibody) at dilution 1/25.