

## PIWIL2 RABBIT PAB

**Cat.#:** S222321

**Product Name:** Anti-PIWIL2 Rabbit Polyclonal Antibody

**Synonyms:** CT80; HILL; mili; PIWIL1L

**UNIPROT ID:** Q8TC59 (Gene Accession - NP\_060538 )

**Background:** PIWIL2 belongs to the Argonaute family of proteins, which function in development and maintenance of germline stem cells (Sasaki et al., 2003 [PubMed 12906857]).

**Immunogen:** Synthetic peptide of human PIWIL2

**Applications:** ELISA, IHC

**Recommended Dilutions:** IHC: 50-100; ELISA: 5000-10000

**Host Species:** Rabbit

**Clonality:** Rabbit Polyclonal

**Isotype:** Immunogen-specific rabbit IgG

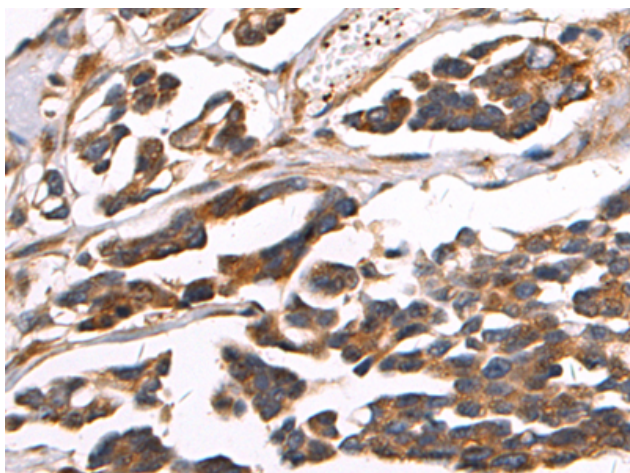
**Purification:** Antigen affinity purification

**Species Reactivity:** Human, Mouse

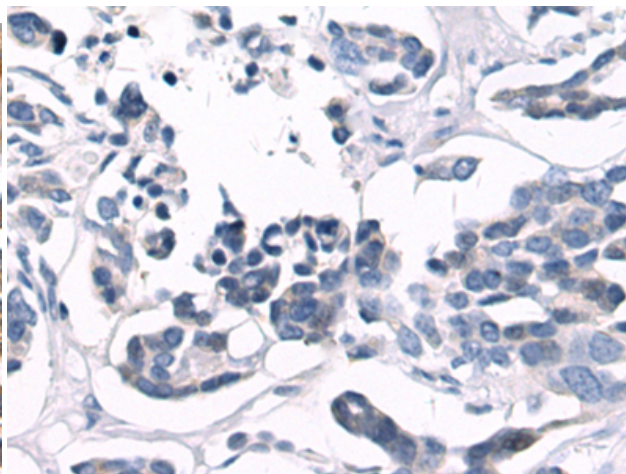
**Constituents:** PBS (without Mg<sup>2+</sup> and Ca<sup>2+</sup>), pH 7.4, 150 mM NaCl, 0.05% Sodium Azide and 40% glycerol

**Research Areas:** Epigenetics and Nuclear Signaling, Stem Cells

**Storage & Shipping:** Store at -20°C. Avoid repeated freezing and thawing



Immunohistochemistry analysis of paraffin embedded Human colorectal cancer tissue using 222321(PIWIL2 Antibody) at a dilution of 1/35(Cytoplasm).



In comparison with the IHC on the left, the same paraffin-embedded Human colorectal cancer tissue is first treated with the synthetic peptide and then with 222321(Anti-PIWIL2 Antibody) at dilution 1/35.