

PIP5K1C RABBIT PAB

Cat.#: S220333

Product Name: Anti-PIP5K1C Rabbit Polyclonal Antibody

Synonyms: LCCS3; PIPKlg_v4; PIP5Kgamma; PIP5K-GAMMA

UNIPROT ID: O60331 (Gene Accession - NP_036530)

Background: This locus encodes a type I phosphatidylinositol 4-phosphate 5-kinase. The encoded protein catalyzes phosphorylation of phosphatidylinositol 4-phosphate, producing phosphatidylinositol 4,5-bisphosphate. This enzyme is found at synapses and has been found to play roles in endocytosis and cell migration. Mutations at this locus have been associated with lethal congenital contractural syndrome. Alternatively spliced transcript variants encoding different isoforms have been described.

Immunogen: Synthetic peptide of human PIP5K1C

Applications: ELISA, WB, IHC

Recommended Dilutions: IHC: 25-100;WB: 500-2000;ELISA: 2000-5000

Host Species: Rabbit

Clonality: Rabbit Polyclonal

Isotype: Immunogen-specific rabbit IgG

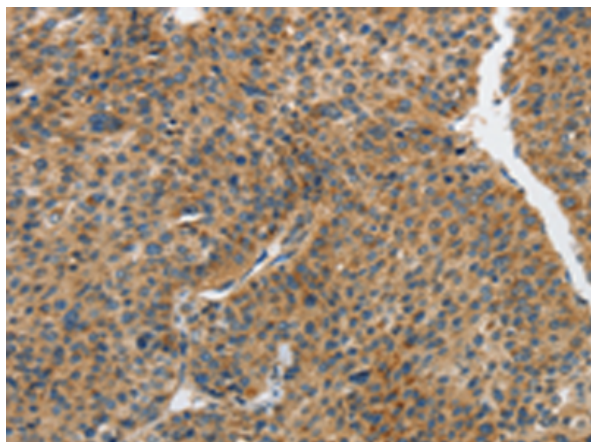
Purification: Antigen affinity purification

Species Reactivity: Human, Mouse, Rat

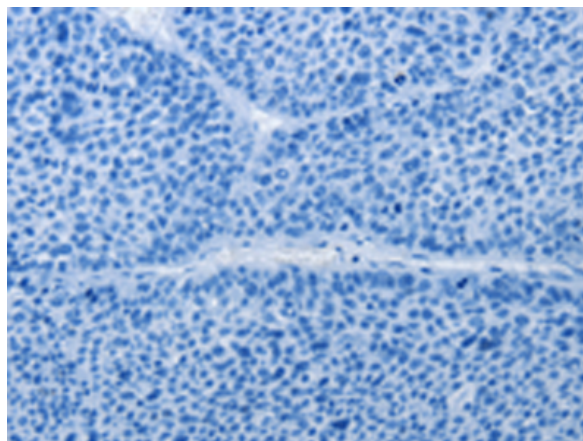
Constituents: PBS (without Mg²⁺ and Ca²⁺), pH 7.4, 150 mM NaCl, 0.05% Sodium Azide and 40% glycerol

Research Areas: Signal Transduction

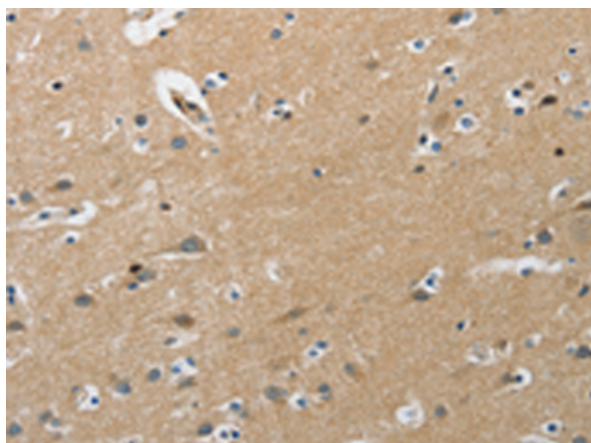
Storage & Shipping: Store at -20°C. Avoid repeated freezing and thawing



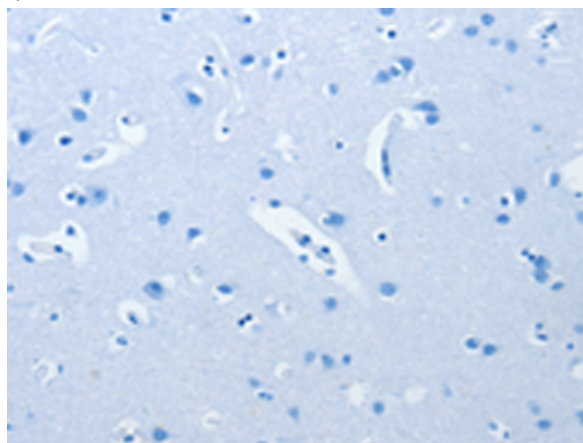
Immunohistochemistry analysis of paraffin embedded Human liver cancer tissue using 220333(PIP5K1C Antibody) at a dilution of 1/25(Cytoplasm).



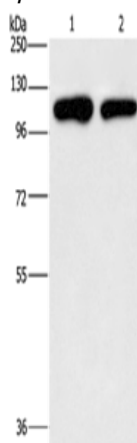
In comparison with the IHC on the left, the same paraffin-embedded Human liver cancer tissue is first treated with the synthetic peptide and then with 220333(Anti-PIP5K1C Antibody) at dilution 1/25.



The image on the left is immunohistochemistry of paraffin-embedded Human brain tissue using 220333(Anti-PIP5K1C Antibody) at a dilution of 1/25.



In comparison with the IHC on the left, the same paraffin-embedded Human brain tissue is first treated with synthetic peptide and then with D261375(Anti-PIP5K1C Antibody) at dilution 1/25.



Gel: 10%SDS-PAGE, Lysate: 40 µg;
 Lane 1-2: A431 cells, hela cells;
 Primary antibody: 220333(PIP5K1C Antibody) at dilution 1/500;
 Secondary antibody: Goat anti rabbit IgG at 1/8000 dilution;
 Exposure time: 2 minutes



Product Description

Pioneering GTPase and Oncogene Product Development since 2010
