

## PIP RABBIT PAB

**Cat.#:** S217470

**Product Name:** Anti-PIP Rabbit Polyclonal Antibody

**Synonyms:** GPIP4; GCDFP15; GCDFP-15

**UNIPROT ID:** P12273 (Gene Accession - BC010950 )

**Background:** The hormonally responsive prolactin-inducible protein (PIP) gene is expressed in benign and malignant breast tumor tissues and in some normal exocrine organs such as sweat, salivary, and lacrimal glands.

**Immunogen:** Fusion protein of human PIP

**Applications:** ELISA, IHC

**Recommended Dilutions:** IHC: 50-100; ELISA: 2000-10000

**Host Species:** Rabbit

**Clonality:** Rabbit Polyclonal

**Isotype:** Immunogen-specific rabbit IgG

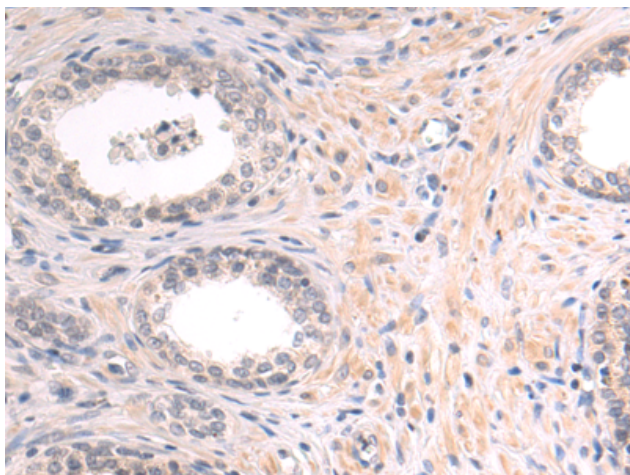
**Purification:** Antigen affinity purification

**Species Reactivity:** Human

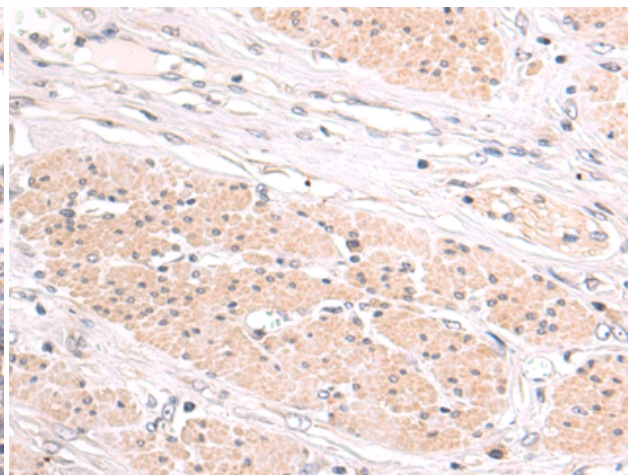
**Constituents:** PBS (without Mg<sup>2+</sup> and Ca<sup>2+</sup>), pH 7.4, 150 mM NaCl, 0.05% Sodium Azide and 40% glycerol

**Research Areas:** Signal Transduction

**Storage & Shipping:** Store at -20°C. Avoid repeated freezing and thawing



Immunohistochemistry analysis of paraffin-embedded Human prostate cancer tissue using 217470(PIP Antibody) at a dilution of 1/50(Secreted).



Immunohistochemistry analysis of paraffin-embedded Human esophagus cancer tissue using 217470(Anti-PIP Antibody) at a dilution of 1/50.