

PIN4 RABBIT PAB

Cat.#: S218121

Product Name: Anti-PIN4 Rabbit Polyclonal Antibody

Synonyms: EPVH; PARI4; PARI7

UNIPROT ID: Q9Y237 (Gene Accession - BC112281)

Background: This gene encodes a member of the parvulin subfamily of the peptidyl-prolyl cis/trans isomerase protein family. The encoded protein catalyzes the isomerization of peptidylprolyl bonds, and may play a role in the cell cycle, chromatin remodeling, and/or ribosome biogenesis. The encoded protein may play an additional role in the mitochondria.

Immunogen: Full length fusion protein

Applications: ELISA, IHC

Recommended Dilutions: IHC: 20-100; ELISA: 5000-10000

Host Species: Rabbit

Clonality: Rabbit Polyclonal

Isotype: Immunogen-specific rabbit IgG

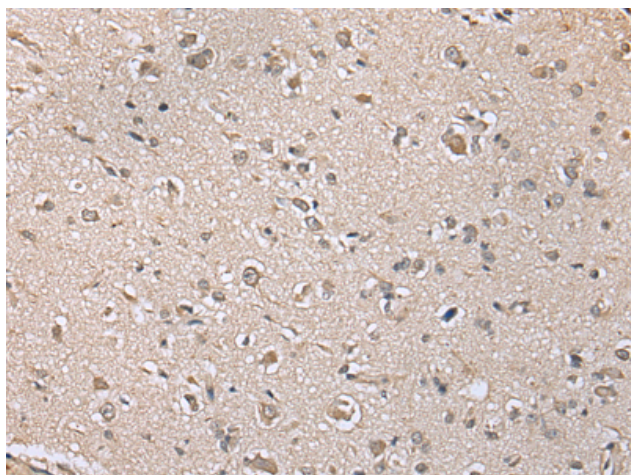
Purification: Antigen affinity purification

Species Reactivity: Human, Mouse

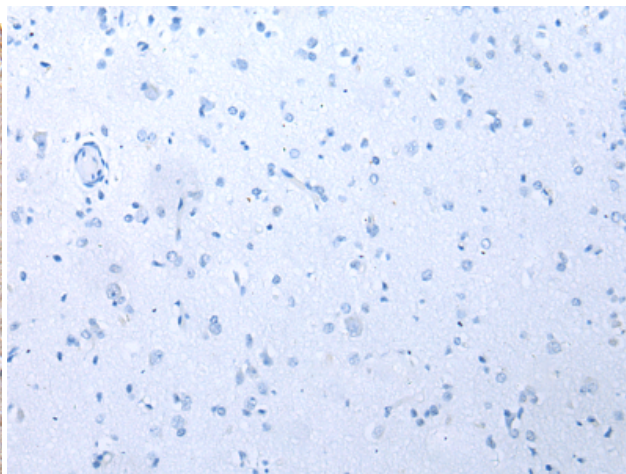
Constituents: PBS (without Mg²⁺ and Ca²⁺), pH 7.4, 150 mM NaCl, 0.05% Sodium Azide and 40% glycerol

Research Areas: Metabolism, Signal Transduction, Epigenetics and Nuclear Signaling

Storage & Shipping: Store at -20°C. Avoid repeated freezing and thawing



Immunohistochemistry analysis of paraffin embedded Human brain tissue using 218121 (PIN4 Antibody) at a dilution of 1/20 (Cytoplasm and Nucleus).



In comparison with the IHC on the left, the same paraffin-embedded Human brain tissue is first treated with the fusion protein and then with 218121 (Anti-PIN4 Antibody) at dilution 1/20.