

## PIN4 RABBIT MAB

**Cat.#:** N262720

**Product Name:** Anti-PIN4 Rabbit Monoclonal Antibody

**Synonyms:** EPVH; PARI4; PARI7

**UNIPROT ID:** Q9Y237

**Background:** Isoform 1 is involved as a ribosomal RNA processing factor in ribosome biogenesis. Binds to tightly bent AT-rich stretches of double-stranded DNA.

**Immunogen:** A synthetic peptide of human PIN4

**Applications:** WB,IP

**Recommended Dilutions:** WB: 1/500-1/1000 IP: 1/20

**Host Species:** Rabbit

**Clonality:** Rabbit Monoclonal

**Clone ID:** R06-815

**MW:** Calculated MW: 14 kDa; Observed MW: 14 kDa

**Isotype:** IgG

**Purification:** Affinity Purified

**Species Reactivity:** Human,Rat,Hamster

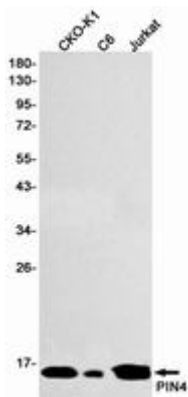
**Conjugation:** Unconjugated

**Modification:** Unmodified

**Constituents:** PBS (without Mg<sup>2+</sup> and Ca<sup>2+</sup>), pH 7.3 containing 50% glycerol, 0.5% BSA and 0.02% sodium azide

**Research Areas:** Epigenetics and Nuclear Signaling

**Storage & Shipping:** Store at -20°C. Avoid repeated freezing and thawing



Western blot analysis of PIN4 in CHO-K1, C6, Jurkat lysates using PIN4 antibody.



# Product Description

Pioneering GTPase and Oncogene Product Development since 2010

---