

PIM3 RABBIT PAB

Cat.#: S220673

Product Name: Anti-PIM3 Rabbit Polyclonal Antibody

Synonyms: pim-3

UNIPROT ID: Q86V86 (Gene Accession - NP_001001852)

Background: The protein encoded by this gene belongs to the Ser/Thr protein kinase family, and PIM subfamily. This gene is overexpressed in hematological and epithelial tumors and is associated with MYC coexpression. It plays a role in the regulation of signal transduction cascades, contributing to both cell proliferation and survival, and provides a selective advantage in tumorigenesis.

Immunogen: Synthetic peptide of human PIM3

Applications: ELISA, WB, IHC

Recommended Dilutions: IHC: 50-200;WB: 1000-5000;ELISA: 5000-10000

Host Species: Rabbit

Clonality: Rabbit Polyclonal

Isotype: Immunogen-specific rabbit IgG

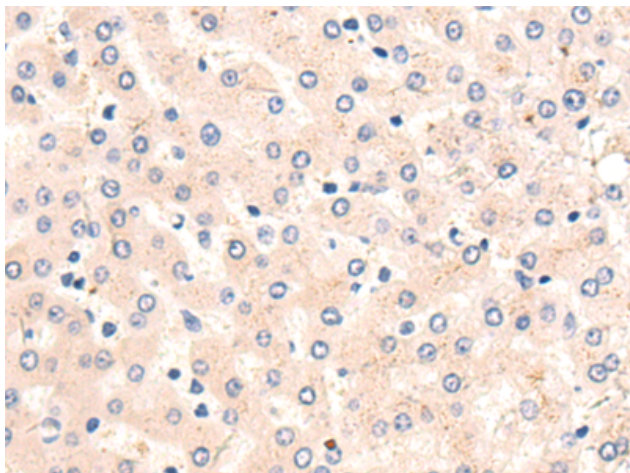
Purification: Antigen affinity purification

Species Reactivity: Human, Mouse, Rat

Constituents: PBS (without Mg²⁺ and Ca²⁺), pH 7.4, 150 mM NaCl, 0.05% Sodium Azide and 40% glycerol

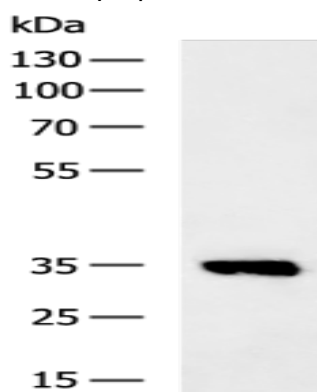
Research Areas: Signal Transduction, Epigenetics and Nuclear Signaling, Cancer

Storage & Shipping: Store at -20°C. Avoid repeated freezing and thawing



✘ In comparison with the IHC on the left, the same paraffin-embedded Human liver cancer tissue is first treated with the synthetic peptide and then with 220673 (Anti-PIM3 Antibody) at dilution 1/50.

Immunohistochemistry analysis of paraffin embedded Human liver cancer tissue using 220673 (PIM3 Antibody) at a dilution of 1/50 (Cytoplasm).



Gel: 8% SDS-PAGE, Lysate: 40 μ g;
Lane: Mouse brain tissue lysate;
Primary antibody: 220673 (PIM3 Antibody) at dilution 1/1350;
Secondary antibody: HRP-conjugated Goat anti rabbit IgG at 1/5000 dilution;
Exposure time: 5 seconds