

PIM2 RABBIT MAB

Cat.#: N263494

Product Name: Anti-PIM2 Rabbit Monoclonal Antibody

Synonyms: PIM2; Serine/threonine-protein kinase pim-2; Pim-2h

UNIPROT ID: Q9PIW9

Background: Promotes cell survival in response to a variety of proliferative signals via positive regulation of the I-kappaB kinase/NF-kappaB cascade; this process requires phosphorylation of MAP3K8/COT. Prevents apoptosis induced by growth factor withdrawal via inhibition of caspase-3 activation, and via phosphorylation of pro-apoptotic proteins.

Immunogen: A synthetic peptide of human PIM2

Applications: WB,IP

Recommended Dilutions: WB: 1/500-1/1000 IP: 1/20

Host Species: Rabbit

Clonality: Rabbit Monoclonal

Clone ID: R04-5D8

MW: Calculated MW: 34 kDa; Observed MW: 40,38,34 kDa

Isotype: IgG

Purification: Affinity Purified

Species Reactivity: Human

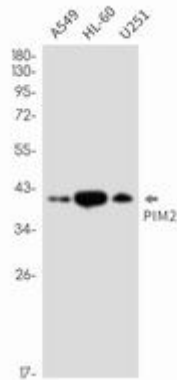
Conjugation: Unconjugated

Modification: Unmodified

Constituents: PBS (without Mg²⁺ and Ca²⁺), pH 7.3 containing 50% glycerol, 0.5% BSA and 0.02% sodium azide

Research Areas: Signal Transduction

Storage & Shipping: Store at -20°C. Avoid repeated freezing and thawing



Western blot analysis of PIM2 in A549, HL-60, U251 lysates using PIM2 antibody.