

PIM1 RABBIT MAB

Cat.#: N263122

Product Name: Anti-PIM1 Rabbit Monoclonal Antibody

Synonyms: PIM1; Serine/threonine-protein kinase pim-1

UNIPROT ID: P11309

Background: Pim1 a proto-oncogene serine/threonine kinase involved in cell survival and cell proliferation and thus providing a selective advantage in tumorigenesis. Exerts its oncogenic activity through: the regulation of MYC transcriptional activity, the regulation of cell cycle progression and by phosphorylation and inhibition of proapoptotic proteins (BAD, MAP3K5, FOXO3). Phosphorylation of MYC leads to an increase of MYC protein stability and thereby an increase of transcriptional activity. The stabilization of MYC exercised by PIM1 might explain partly the strong synergism between these two oncogenes in tumorigenesis.

Immunogen: A synthetic peptide of human PIM1

Applications: WB,IHC-P

Recommended Dilutions: WB: 1/500-1/1000 IHC: 1/50-1/100

Host Species: Rabbit

Clonality: Rabbit Monoclonal

Clone ID: R08-8D5

MW: Calculated MW: 36 kDa; Observed MW: 36 kDa

Isotype: IgG

Purification: Affinity Purified

Species Reactivity: Human

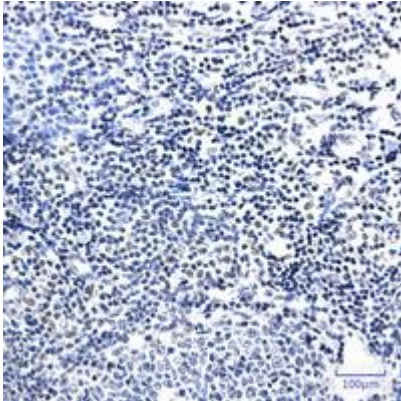
Conjugation: Unconjugated

Modification: Unmodified

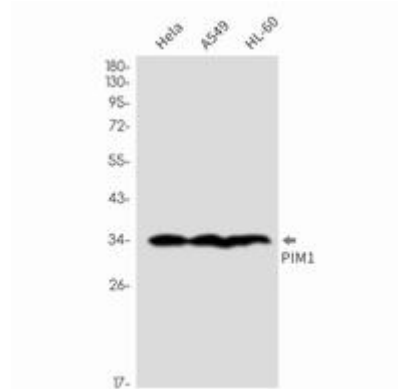
Constituents: PBS (without Mg²⁺ and Ca²⁺), pH 7.3 containing 50% glycerol, 0.5% BSA and 0.02% sodium azide

Research Areas: Signal Transduction

Storage & Shipping: Store at -20°C. Avoid repeated freezing and thawing



Immunohistochemistry analysis of paraffin-embedded Human tonsil using PIM1 antibody. High-pressure and temperature Sodium Citrate pH 6.0 was used for antigen retrieval.



Western blot analysis of PIM1 in Hela, A549, HL-60 lysates using PIM1 antibody.