

PIAS2 RABBIT PAB

Cat.#: S214096

Product Name: Anti-PIAS2 Rabbit Polyclonal Antibody

Synonyms: DIP; MIZ; MIZ1; SIZ2; ARIP3; PIASX; ZMIZ4; PIASX-BETA; PIASX-ALPHA

UNIPROT ID: O75928 (Gene Accession - NP_004662)

Background: This gene encodes a member of the protein inhibitor of activated STAT (PIAS) family. PIAS proteins function as SUMO E3 ligases and play important roles in many cellular processes by mediating the sumoylation of target proteins. Alternatively spliced transcript variants encoding multiple isoforms have been observed for this gene. Isoforms of the encoded protein enhance the sumoylation of specific target proteins including the p53 tumor suppressor protein, c-Jun, and the androgen receptor. A pseudogene of this gene is located on the short arm of chromosome 4. The symbol MIZ1 has also been associated with ZBTB17 which is a different gene located on chromosome 1.

Immunogen: Synthetic peptide of human PIAS2

Applications: ELISA, IHC

Recommended Dilutions: IHC: 50-200; ELISA: 1000-5000

Host Species: Rabbit

Clonality: Rabbit Polyclonal

Isotype: Immunogen-specific rabbit IgG

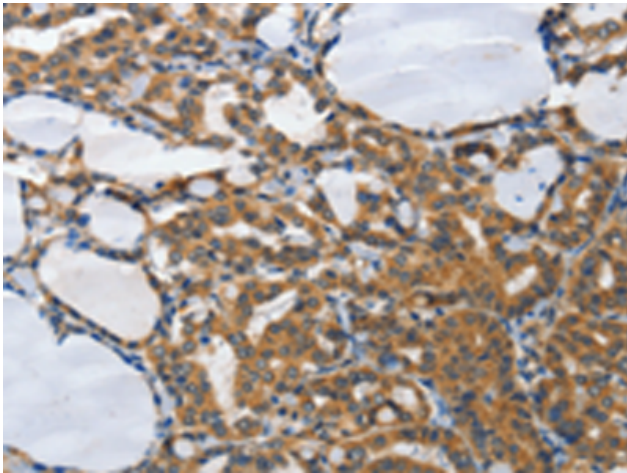
Purification: Antigen affinity purification

Species Reactivity: Human, Mouse

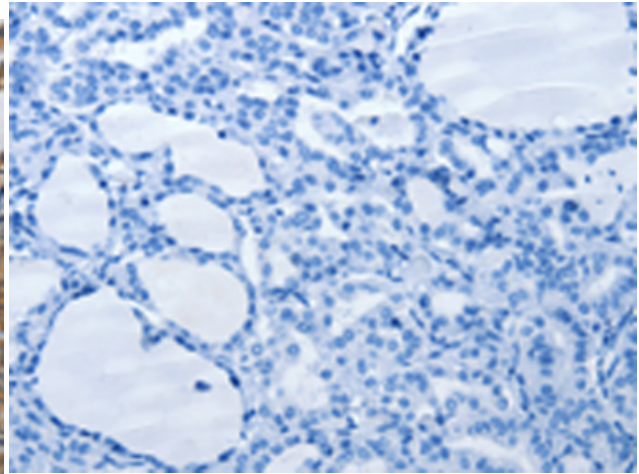
Constituents: PBS (without Mg²⁺ and Ca²⁺), pH 7.4, 150 mM NaCl, 0.05% Sodium Azide and 40% glycerol

Research Areas: Epigenetics and Nuclear Signaling, Cell Biology

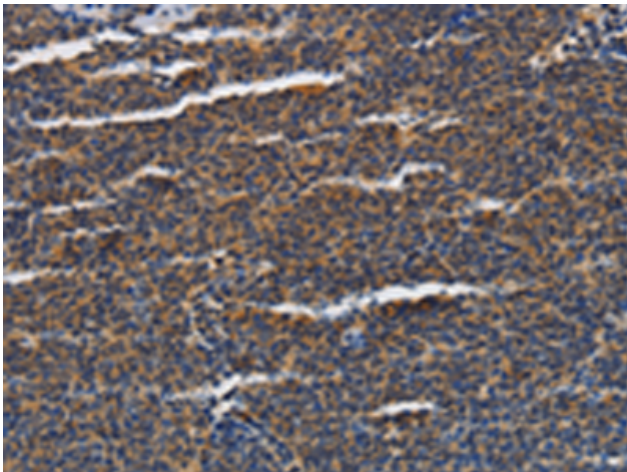
Storage & Shipping: Store at -20°C. Avoid repeated freezing and thawing



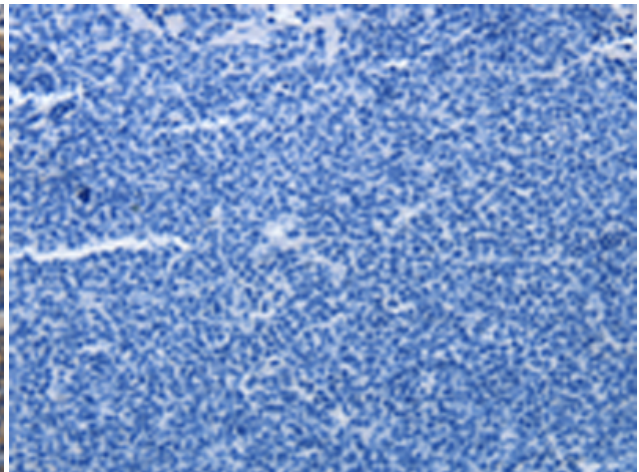
Immunohistochemistry analysis of paraffin-embedded Human thyroid cancer tissue using 214096(PIAS2 Antibody) at a dilution of 1/70(Cytoplasm).



In comparison with the IHC on the left, the same paraffin-embedded Human thyroid cancer tissue is first treated with the synthetic peptide and then with 214096(Anti-PIAS2 Antibody) at dilution 1/70.



The image on the left is immunohistochemistry of paraffin-embedded Human lymphoma tissue using 214096(Anti-PIAS2 Antibody) at a dilution of 1/70.



In comparison with the IHC on the left, the same paraffin-embedded Human lymphoma tissue is first treated with synthetic peptide and then with D161334(Anti-PIAS2 Antibody) at dilution 1/70.