

PHTF2 RABBIT PAB

Cat.#: S218089

Product Name: Anti-PHTF2 Rabbit Polyclonal Antibody

Synonyms:

UNIPROT ID: Q8N3S3 (Gene Accession - BC032334)

Background: PHTF2 (putative homeodomain transcription factor 2) is a 785 amino acid protein that contains one basic helix-loop-helix (bHLH) domain and belongs to the PHTF family. Homologous to PHTF1, PHTF2 exhibits strongest similarity within putative homeodomains and both N- and C-terminal regions. Existing as four alternatively spliced isoforms, PHTF2 localizes to nucleus and participates in DNA binding. PHTF2 may also play a role in transcriptional regulation. While PHTF1 is expressed mainly in testis, PHTF2 is predominantly expressed in muscle, which suggests that both may have acquired different functions after their duplication and divergence. The gene that encodes PHTF2 maps to human chromosome 7q11.23.

Immunogen: Fusion protein of human PHTF2

Applications: ELISA, IHC

Recommended Dilutions: IHC: 20-100; ELISA: 2000-5000

Host Species: Rabbit

Clonality: Rabbit Polyclonal

Isotype: Immunogen-specific rabbit IgG

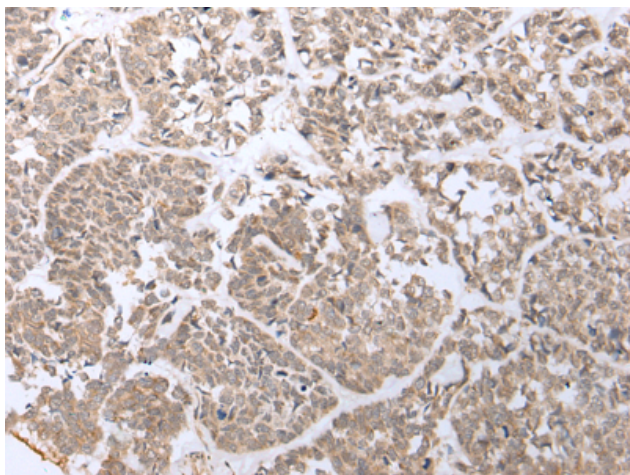
Purification: Antigen affinity purification

Species Reactivity: Human, Mouse

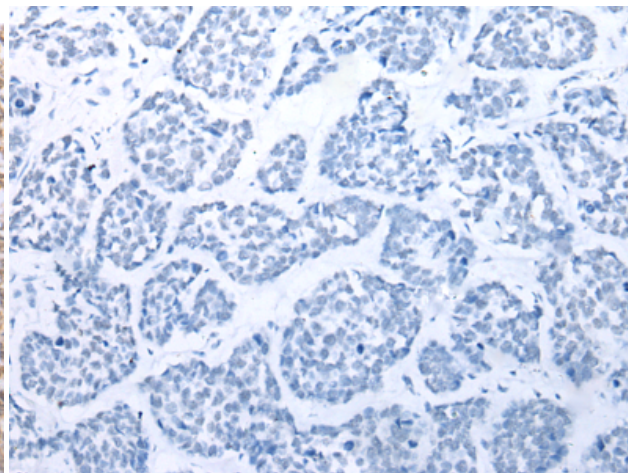
Constituents: PBS (without Mg²⁺ and Ca²⁺), pH 7.4, 150 mM NaCl, 0.05% Sodium Azide and 40% glycerol

Research Areas: Epigenetics and Nuclear Signaling

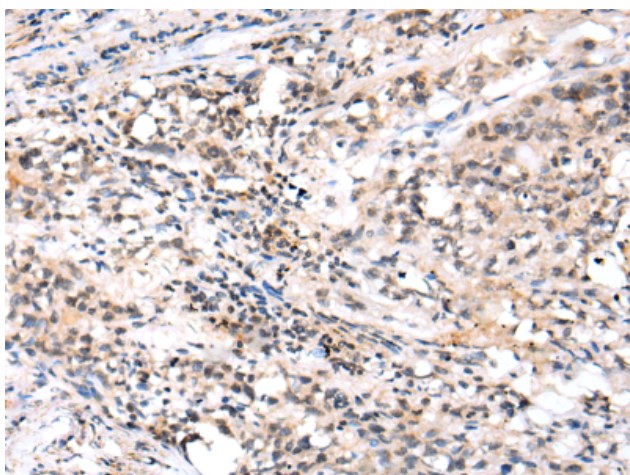
Storage & Shipping: Store at -20°C. Avoid repeated freezing and thawing



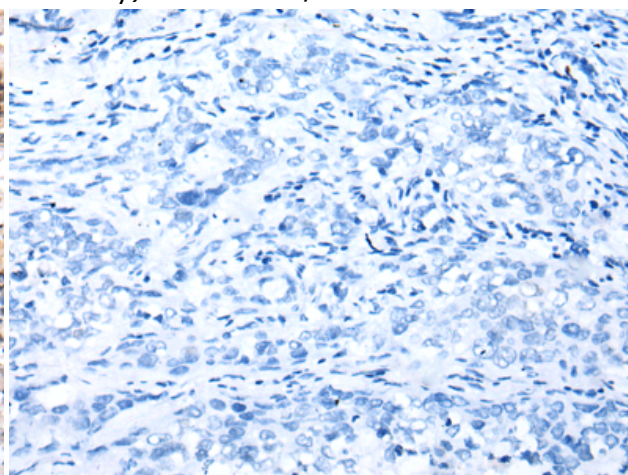
Immunohistochemistry analysis of paraffin embedded Human esophagus cancer tissue using 218089(PHTF2 Antibody) at a dilution of 1/20(Nucleus).



In comparison with the IHC on the left, the same paraffin-embedded Human esophagus cancer tissue is first treated with the fusion protein and then with 218089(Anti-PHTF2 Antibody) at dilution 1/20.



The image on the left is immunohistochemistry of paraffin-embedded Human lung cancer tissue using 218089(Anti-PHTF2 Antibody) at a dilution of 1/20.



In comparison with the IHC on the left, the same paraffin-embedded Human lung cancer tissue is first treated with fusion protein and then with D223681(Anti-PHTF2 Antibody) at dilution 1/20.