

PHPT1 RABBIT PAB

Cat.#: S219193

Product Name: Anti-PHPT1 Rabbit Polyclonal Antibody

Synonyms: PHP; PHP14; CGI-202; HSPC141; HEL-S-132P

UNIPROT ID: Q9NRX4 (Gene Accession - BC024648)

Background: This gene encodes an enzyme that catalyzes the reversible dephosphorylation of histidine residues in proteins. It may be involved in the dephosphorylation of G-beta and ATP citrate lyase and in negatively regulating CD4 T lymphocytes by dephosphorylation and inhibition of KCa3.1 channels. Alternative splicing results in multiple transcript variants.

Immunogen: Fusion protein of human PHPT1

Applications: ELISA, WB, IHC

Recommended Dilutions: IHC: 200-400;WB: 1000-5000;ELISA: 5000-10000

Host Species: Rabbit

Clonality: Rabbit Polyclonal

Isotype: Immunogen-specific rabbit IgG

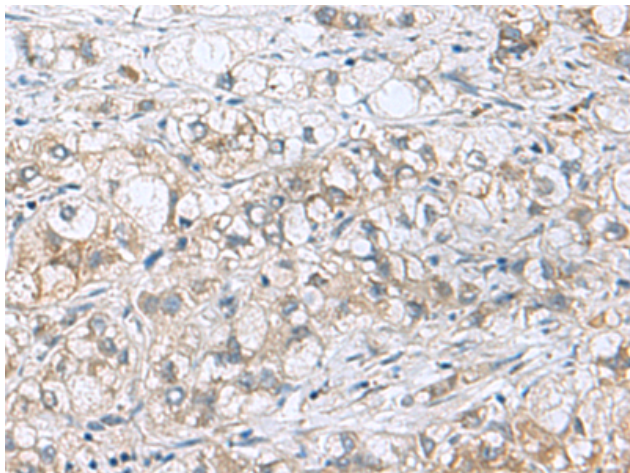
Purification: Antigen affinity purification

Species Reactivity: Human, Mouse

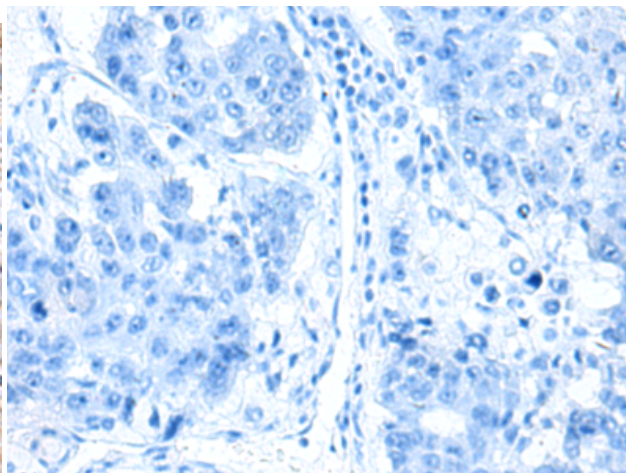
Constituents: PBS (without Mg²⁺ and Ca²⁺), pH 7.4, 150 mM NaCl, 0.05% Sodium Azide and 40% glycerol

Research Areas: Signal Transduction

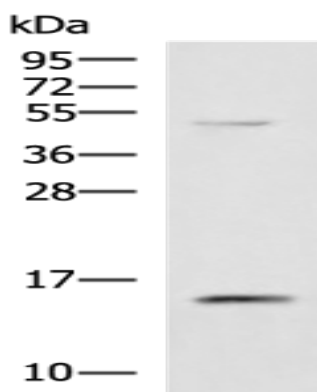
Storage & Shipping: Store at -20°C. Avoid repeated freezing and thawing



Immunohistochemistry analysis of paraffin embedded Human liver cancer tissue using 219193(PHPT1 Antibody) at a dilution of 1/210(Cytoplasm).



In comparison with the IHC on the left, the same paraffin-embedded Human liver cancer tissue is first treated with the fusion protein and then with 219193(Anti-PHPT1 Antibody) at dilution 1/210.



Gel: 12%SDS-PAGE, Lysate: 40 μ g;
Lane: 293T cell lysate;
Primary antibody: 219193(PHPT1 Antibody) at dilution 1/800;
Secondary antibody: HRP-conjugated Goat anti rabbit IgG at 1/5000 dilution;
Exposure time: 10 seconds