

## PHOSPHOLIPASE C GAMMA 1 RABBIT MAB

**Cat.#:** N263492

**Product Name:** Anti-Phospholipase C gamma 1 Rabbit Monoclonal Antibody

**Synonyms:** PLCG1; PLC1; 1-phosphatidylinositol 4; 5-bisphosphate phosphodiesterase gamma-1; PLC-148; Phosphoinositide phospholipase C-gamma-1; Phospholipase C-II; PLC-II; Phospholipase C-gamma-1; PLC-gamma-1

**UNIPROT ID:** P19174

**Background:** The protein encoded by this gene catalyzes the formation of inositol 1,4,5-trisphosphate and diacylglycerol from phosphatidylinositol 4,5-bisphosphate. This reaction uses calcium as a cofactor and plays an important role in the intracellular transduction of receptor-mediated tyrosine kinase activators. For example, when activated by SRC, the encoded protein causes the Ras guanine nucleotide exchange factor RasGRP1 to translocate to the Golgi, where it activates Ras.

**Immunogen:** A synthetic peptide of human Phospholipase C gamma 1/PLC-gamma-1

**Applications:** WB,ICC/IF,IP

**Recommended Dilutions:** WB: 1/500-1/1000 IF: 1/50-1/200 IP: 1/20

**Host Species:** Rabbit

**Clonality:** Rabbit Monoclonal

**Clone ID:** R01-6B4

**MW:** Calculated MW: 149 kDa; Observed MW: 149 kDa

**Isotype:** IgG

**Purification:** Affinity Purified

**Species Reactivity:** Human,Rat

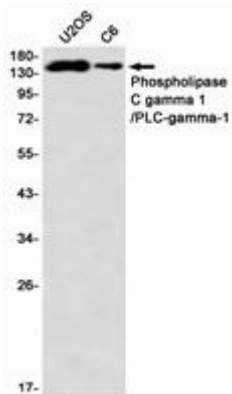
**Conjugation:** Unconjugated

**Modification:** Unmodified

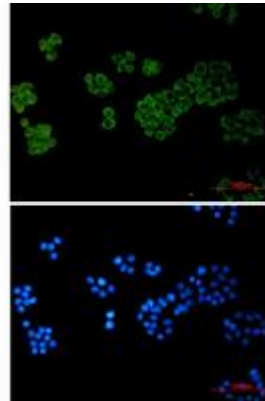
**Constituents:** PBS (without Mg<sup>2+</sup> and Ca<sup>2+</sup>), pH 7.3 containing 50% glycerol, 0.5% BSA and 0.02% sodium azide

**Research Areas:** Cardiovascular

**Storage & Shipping:** Store at -20°C. Avoid repeated freezing and thawing



Western blot analysis of Phospholipase C gamma 1/PLCgamma1 in U2OS, C6 lysates using Phospholipase C gamma 1/PLCgamma1 antibody.



Immunocytochemistry analysis of Phospholipase C gamma 1 (green) in HeLa using Phospholipase C gamma 1 antibody, and DAPI (blue).