

PHOSPHO-SYNAPSIN I (SER9) RABBIT MAB

Cat.#: N261705

Product Name: Anti-Phospho-Synapsin I (Ser9) Rabbit Monoclonal Antibody

Synonyms: SYNI; Synapsin-1; Brain protein 4.1; Synapsin I

UNIPROT ID: P17600

Background: This gene is a member of the synapsin gene family. Synapsins encode neuronal phosphoproteins which associate with the cytoplasmic surface of synaptic vesicles. Family members are characterized by common protein domains, and they are implicated in synaptogenesis and the modulation of neurotransmitter release, suggesting a potential role in several neuropsychiatric diseases.

Immunogen: A synthetic phosphopeptide corresponding to residues surrounding Ser9 of human Synapsin I

Applications: WB,IHC-P

Recommended Dilutions: WB: 1/500-1/1000 IHC: 1/50-1/100

Host Species: Rabbit

Clonality: Rabbit Monoclonal

Clone ID: R06-7B8

MW: Calculated MW: 74 kDa; Observed MW: 77 kDa

Isotype: IgG

Purification: Affinity Purified

Species Reactivity: Human,Rat

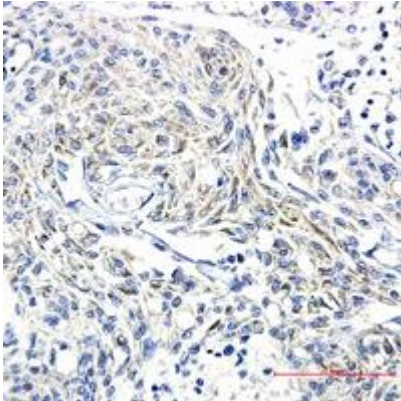
Conjugation: Unconjugated

Modification: Phosphorylated

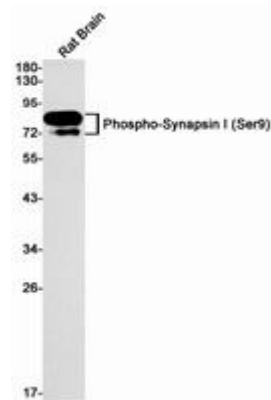
Constituents: PBS (without Mg²⁺ and Ca²⁺), pH 7.3 containing 50% glycerol, 0.5% BSA and 0.02% sodium azide

Research Areas: Neuroscience

Storage & Shipping: Store at -20°C. Avoid repeated freezing and thawing



Immunohistochemistry analysis of paraffin-embedded Human Brain using Synapsin I (Phospho- S9) antibody. High-pressure and temperature Sodium Citrate pH 6.0 was used for antigen retrieval.



Western blot analysis of Phospho-Synapsin I (Ser9) in rat Brain lysates using Phospho-Synapsin I (Ser9) antibody.