

PHOSPHO-STAT1 (SER727) RABBIT MAB

Cat.#: N262937

Product Name: Anti-Phospho-STAT1 (Ser727) Rabbit Monoclonal Antibody

Synonyms: STAT1; Signal transducer and activator of transcription 1-
alpha/beta; Transcription factor ISGF-3 components p91/p84

UNIPROT ID: P42224

Background: The protein encoded by this gene is a member of the STAT protein family. In response to cytokines and growth factors, STAT family members are phosphorylated by the receptor associated kinases, and then form homo- or heterodimers that translocate to the cell nucleus where they act as transcription activators.

Immunogen: A synthetic phosphopeptide corresponding to residues surrounding Ser727 of human STAT1

Applications: WB,IHC-P

Recommended Dilutions: WB: 1/500-1/1000 IHC: 1/50-1/100

Host Species: Rabbit

Clonality: Rabbit Monoclonal

Clone ID: R09-2G9

MW: Calculated MW: 87 kDa; Observed MW: 87 kDa

Isotype: IgG

Purification: Affinity Purified

Species Reactivity: Human,Mouse,Rat

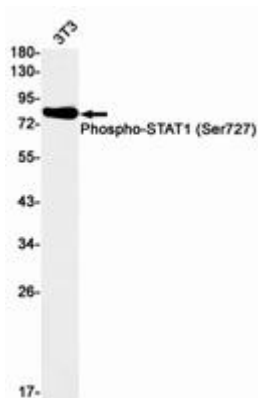
Conjugation: Unconjugated

Modification: Phosphorylated

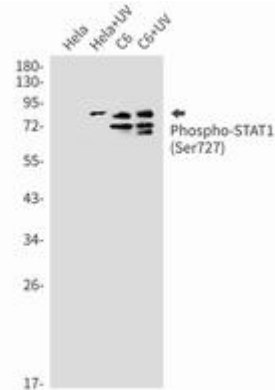
Constituents: PBS (without Mg²⁺ and Ca²⁺), pH 7.3 containing 50% glycerol, 0.5% BSA and 0.02% sodium azide

Research Areas: Signal Transduction

Storage & Shipping: Store at -20°C. Avoid repeated freezing and thawing



Western blot analysis of Phospho-STAT1 (Ser727) in 3T3 lysates using Phospho-STAT1 (Ser727) antibody.



Western blot analysis of Phospho-STAT1 (Ser727) in Hela, Hela+UV, C6, C6+UV lysates using Phospho-STAT1 (Ser727) antibody.