

## PHOSPHO-SRC (TYR530) RABBIT MAB

**Cat.#:** N263198

**Product Name:** Anti-Phospho-Src (Tyr530) Rabbit Monoclonal Antibody

**Synonyms:** SRC; SRC1; Proto-oncogene tyrosine-protein kinase Src; Proto-oncogene c-Src; pp60c-src; p60-Src

**UNIPROT ID:** P12931

**Background:** Src activity is regulated by tyrosine phosphorylation at two sites, but with opposing effects. While phosphorylation at Tyr416 in the activation loop of the kinase domain upregulates enzyme activity, phosphorylation at Tyr527 in the carboxy-terminal tail by Csk renders the enzyme less active (2).

**Immunogen:** A synthetic phosphopeptide corresponding to residues surrounding Tyr529 of human Src

**Applications:** WB,IP

**Recommended Dilutions:** WB: 1/500-1/1000 IP: 1/20

**Host Species:** Rabbit

**Clonality:** Rabbit Monoclonal

**Clone ID:** R03-8H8

**MW:** Calculated MW: 60 kDa; Observed MW: 60 kDa

**Isotype:** IgG

**Purification:** Affinity Purified

**Species Reactivity:** Rat

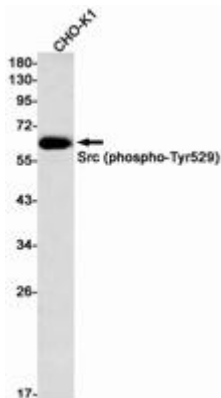
**Conjugation:** Unconjugated

**Modification:** Phosphorylated

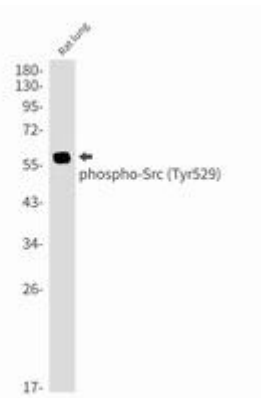
**Constituents:** PBS (without Mg<sup>2+</sup> and Ca<sup>2+</sup>), pH 7.3 containing 50% glycerol, 0.5% BSA and 0.02% sodium azide

**Research Areas:** Signal Transduction

**Storage & Shipping:** Store at -20°C. Avoid repeated freezing and thawing



Western blot analysis of Src (Phospho-Tyr529) in CHO-K1 lysates using Src (Phospho-Tyr529) antibody.



Western blot analysis of Phospho-Src (Tyr529) in rat lung lysates using Phospho-Src (Tyr530) antibody.