

PHOSPHO-SRC (TYR419) RABBIT PAB

Cat.#: N225623

Product Name: Anti-Phospho-Src (Tyr419) Rabbit pAb

Synonyms: SRC; SRC1; Proto-oncogene tyrosine-protein kinase Src; Proto-oncogene c-Src; pp60c-src; p60-Src

UNIPROT ID: P12931

Background: Src activity is regulated by tyrosine phosphorylation at two sites, but with opposing effects. While phosphorylation at Tyr416 in the activation loop of the kinase domain upregulates enzyme activity, phosphorylation at Tyr527 in the carboxy-terminal tail by Csk renders the enzyme less active (2).

Immunogen: A synthesized peptide derived from human Phospho-Src (Y419)

Applications: WB,FC

Recommended Dilutions: WB: 1/500-1/1000 FC: 1/50-1/100

Host Species: Rabbit

Clonality: Rabbit Polyclonal

Clone ID: -

MW: Calculated MW: 60 kDa; Observed MW: 60 kDa

Isotype: IgG

Purification: Affinity Chromatography

Species Reactivity: Human,Mouse,Rat

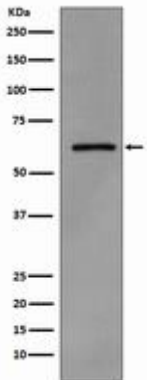
Conjugation: Unconjugated

Modification: Phosphorylated

Constituents: PBS (without Mg²⁺ and Ca²⁺), pH 7.3 containing 50% glycerol, 0.5% BSA and 0.02% sodium azide

Research Areas: Signal Transduction

Storage & Shipping: Store at -20°C. Avoid repeated freezing and thawing



Western blot analysis of Phospho-Src (Y419) in A431 lysates treated with pervanadate using Phospho-Src (Tyr419) antibody.