

PHOSPHO-RSK2 (SER227) RABBIT MAB

Cat.#: N262854

Product Name: Anti-Phospho-RSK2 (Ser227) Rabbit Monoclonal Antibody

Synonyms: RPS6KA3; ISPK1; MAPKAPK1B; RSK2; Ribosomal protein S6 kinase alpha-3; S6K-alpha-3; 90 kDa ribosomal protein S6 kinase 3; p90-RSK 3; p90RSK3; Insulin-stimulated protein kinase 1; ISPK-1; MAP kinase-activated protein kinase 1b; MAPK-activated

UNIPROT ID: P51812

Background: This gene encodes a member of the RSK (ribosomal S6 kinase) family of serine/threonine kinases. This kinase contains 2 non-identical kinase catalytic domains and phosphorylates various substrates, including members of the mitogen-activated kinase (MAPK) signalling pathway. The activity of this protein has been implicated in controlling cell growth and differentiation. Mutations in this gene have been associated with Coffin-Lowry syndrome (CLS).

Immunogen: A synthetic phosphopeptide corresponding to residues surrounding Ser227 of human Rsk 2/MAPKAP Kinase 1b

Applications: WB,IP

Recommended Dilutions: WB: 1/500-1/1000 IP: 1/20

Host Species: Rabbit

Clonality: Rabbit Monoclonal

Clone ID: R01-5B5

MW: Calculated MW: 84 kDa; Observed MW: 84 kDa

Isotype: IgG

Purification: Affinity Purified

Species Reactivity: Human,Mouse,Rat

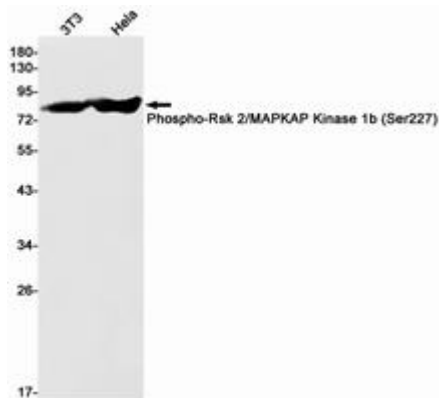
Conjugation: Unconjugated

Modification: Phosphorylated

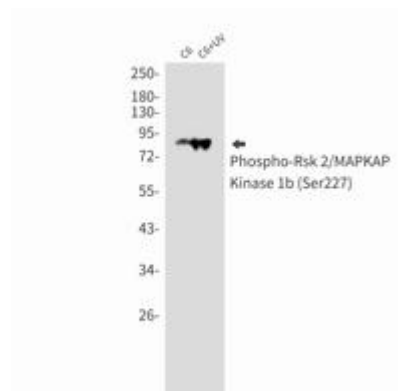
Constituents: PBS (without Mg²⁺ and Ca²⁺), pH 7.3 containing 50% glycerol, 0.5% BSA and 0.02% sodium azide

Research Areas: Signal Transduction

Storage & Shipping: Store at -20°C. Avoid repeated freezing and thawing



Western blot analysis of Phospho-Rsk 2/MAPKAP Kinase 1b (Ser227) in 3T3, HeLa lysates using Phospho-Rsk 2/MAPKAP Kinase 1b (Ser227) antibody.



Western blot analysis of Phospho-Rsk 2/MAPKAP Kinase 1b (Ser227) in C6, C6+UV lysates using Phospho-RSK2 (Ser227) antibody.