

PHOSPHO-RB (SER780) RABBIT MAB

Cat.#: N262820

Product Name: Anti-Phospho-Rb (Ser780) Rabbit Monoclonal Antibody

Synonyms: Rb1; Retinoblastoma-associated protein; p105-Rb; pRb; Rb; pp110

UNIPROT ID: P06400

Background: Cell cycle-dependent phosphorylation by a CDK inhibits Rb target binding and allows cell cycle progression. Rb inactivation and subsequent cell cycle progression likely requires an initial phosphorylation by cyclin D-CDK4/6 followed by cyclin E-CDK2 phosphorylation. Specificity of different CDK/cyclin complexes has been observed in vitro and cyclin D1 is required for Ser780 phosphorylation in vivo.

Immunogen: A synthetic phosphopeptide corresponding to residues surrounding Ser780 of human Rb

Applications: WB,IP

Recommended Dilutions: WB: 1/500-1/1000 IP: 1/20

Host Species: Rabbit

Clonality: Rabbit Monoclonal

Clone ID: R01-8H7

MW: Calculated MW: 106 kDa; Observed MW: 110 kDa

Isotype: IgG

Purification: Affinity Purified

Species Reactivity: Human,Rat

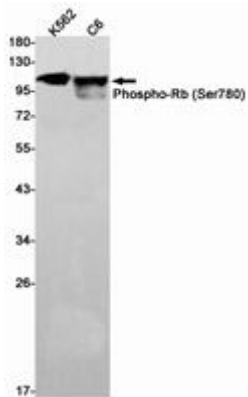
Conjugation: Unconjugated

Modification: Phosphorylated

Constituents: PBS (without Mg²⁺ and Ca²⁺), pH 7.3 containing 50% glycerol, 0.5% BSA and 0.02% sodium azide

Research Areas: Cell Biology

Storage & Shipping: Store at -20°C. Avoid repeated freezing and thawing



Western blot analysis of Phospho-Rb (Ser780) in K562, C6 lysates using Phospho-Rb (Ser780) antibody.