

PHOSPHO-RAF1 (SER259) RABBIT PAB

Cat.#: N225740

Product Name: Anti-Phospho-Raf1 (Ser259) Rabbit pAb

Synonyms: RAF1; RAF; RAF proto-oncogene serine/threonine-protein kinase; Proto-oncogene c-RAF; cRaf; Raf-1

UNIPROT ID: P04049

Background: Raf-1 is a MAP kinase kinase kinase (MAP3K) which functions downstream of the Ras family of membrane associated GTPases to which it binds directly. Once activated Raf-1 can phosphorylate to activate the dual specificity protein kinases MEK1 and MEK2 which in turn phosphorylate to activate the serine/threonine specific protein kinases ERK1 and ERK2.

Immunogen: A synthesized peptide derived from human Phospho-Raf1 (S259)

Applications: WB,IHC-P

Recommended Dilutions: WB: 1/500-1/1000 IHC: 1/50-1/100

Host Species: Rabbit

Clonality: Rabbit Polyclonal

Clone ID: -

MW: Calculated MW: 73 kDa; Observed MW: 73 kDa

Isotype: IgG

Purification: Affinity Chromatography

Species Reactivity: Human,Mouse,Rat

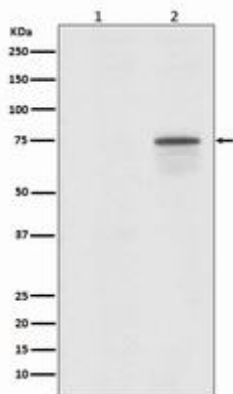
Conjugation: Unconjugated

Modification: Phosphorylated

Constituents: PBS (without Mg²⁺ and Ca²⁺), pH 7.3 containing 50% glycerol, 0.5% BSA and 0.02% sodium azide

Research Areas: Signal Transduction

Storage & Shipping: Store at -20°C. Avoid repeated freezing and thawing



Western blot analysis of Phospho-Raf1 (S259) in (1) 293T lysates; (2) 293T lysates treated with Okadaic Acid + Calyculin A using Phospho-Raf1 (Ser259) antibody.