

PHOSPHO-RAD17 (SER656) RABBIT MAB

Cat.#: N263190

Product Name: Anti-Phospho-Rad17 (Ser656) Rabbit Monoclonal Antibody

Synonyms: RAD17; R24L; Cell cycle checkpoint protein RAD17; hRad17; RF-C/activator 1 homolog

UNIPROT ID: O75943

Background: Essential for sustained cell growth, maintenance of chromosomal stability, and ATR-dependent checkpoint activation upon DNA damage.

Immunogen: A synthetic phosphopeptide corresponding to residues surrounding Ser656 of human Rad17

Applications: WB,IHC-F,IHC-P,ICC/IF

Recommended Dilutions: WB: 1/500-1/1000 IHC: 1/50-1/100 IF: 1/50-1/200

Host Species: Rabbit

Clonality: Rabbit Monoclonal

Clone ID: R08-3F4

MW: Calculated MW: 77 kDa; Observed MW: 80 kDa

Isotype: IgG

Purification: Affinity Purified

Species Reactivity: Human

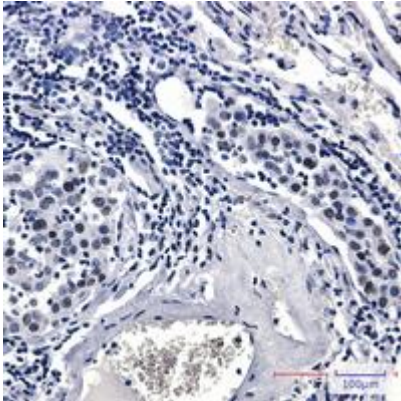
Conjugation: Unconjugated

Modification: Phosphorylated

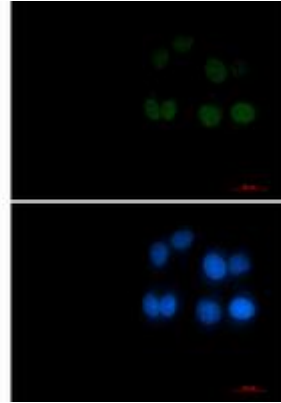
Constituents: PBS (without Mg²⁺ and Ca²⁺), pH 7.3 containing 50% glycerol, 0.5% BSA and 0.02% sodium azide

Research Areas: Cell Biology

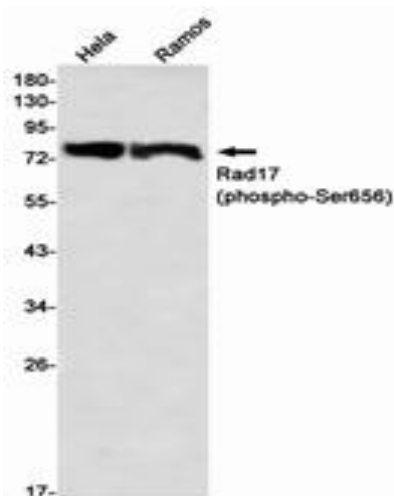
Storage & Shipping: Store at -20°C. Avoid repeated freezing and thawing



Immunohistochemistry analysis of paraffin-embedded Human lung cancer tissue using Rad17 (Phospho-Ser656) antibody. High-pressure and temperature Sodium Citrate pH 6.0 was used for antigen retrieval.



Immunocytochemistry analysis of Phospho-Rad17 (Ser656) (green) in HeLa using Phospho-Rad17 (Ser656) antibody, and DAPI (blue).



Western blot analysis of Rad17 (Phospho-Ser656) in HeLa, Ramos lysates using Rad17 (Phospho-Ser656) antibody.