

## PHOSPHO-PTP1B (SER352) RABBIT MAB

**Cat.#:** N261720

**Product Name:** Anti-Phospho-PTP1B (Ser352) Rabbit Monoclonal Antibody

**Synonyms:** PTPN1; PTP1B; Tyrosine-protein phosphatase non-receptor type 1; Protein-tyrosine phosphatase 1B; PTP-1B

**UNIPROT ID:** P18031

**Background:** The protein encoded by this gene is the founding member of the protein tyrosine phosphatase (PTP) family, which was isolated and identified based on its enzymatic activity and amino acid sequence. PTPs catalyze the hydrolysis of the phosphate monoesters specifically on tyrosine residues.

**Immunogen:** A synthetic phosphopeptide corresponding to residues surrounding Ser352 of human PTP1B

**Applications:** WB, ICC/IF, IP

**Recommended Dilutions:** WB: 1/500-1/1000 IF: 1/50-1/200 IP: 1/20

**Host Species:** Rabbit

**Clonality:** Rabbit Monoclonal

**Clone ID:** R04-1F2

**MW:** Calculated MW: 50 kDa; Observed MW: 50 kDa

**Isotype:** IgG

**Purification:** Affinity Purified

**Species Reactivity:** Human

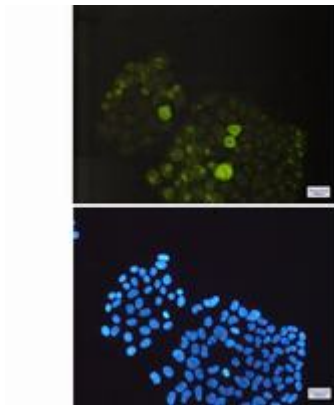
**Conjugation:** Unconjugated

**Modification:** Phosphorylated

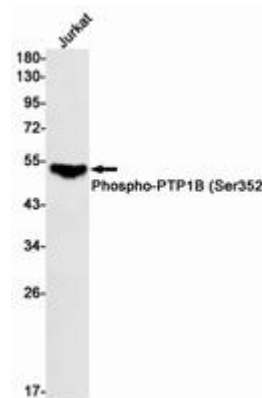
**Constituents:** PBS (without Mg<sup>2+</sup> and Ca<sup>2+</sup>), pH 7.3 containing 50% glycerol, 0.5% BSA and 0.02% sodium azide

**Research Areas:** Signal Transduction

**Storage & Shipping:** Store at -20°C. Avoid repeated freezing and thawing



Immunocytochemistry analysis of Phospho-PTP1B (Ser352)(green) in HeLa using Phospho-PTP1B (Ser352) antibody, and DAPI(blue)



Western blot analysis of Phospho-PTP1B (Ser352) in Jurkat lysates using Phospho-PTP1B (Ser352) antibody.