

## PHOSPHO-PML PROTEIN (SER518) RABBIT MAB

**Cat.#:** N263187

**Product Name:** Anti-Phospho-PML Protein (Ser518) Rabbit Monoclonal Antibody

**Synonyms:** PML; MYL; RNF71; TRIM19; Protein PML; Promyelocytic leukemia protein; RING finger protein 71; Tripartite motif-containing protein 19

**UNIPROT ID:** P29590

**Background:** Regulates RB1 phosphorylation and activity. Required for normal development of the brain cortex during embryogenesis. Can sequester herpes virus and varicella virus proteins inside PML bodies, and thereby inhibit the formation of infectious viral particles. Regulates phosphorylation of ITPR3 and plays a role in the regulation of calcium homeostasis at the endoplasmic reticulum (By similarity). Regulates transcription activity of ELF4.

**Immunogen:** A synthetic phosphopeptide corresponding to residues surrounding Ser518 of human PML Protein

**Applications:** WB,IHC-P

**Recommended Dilutions:** WB: 1/500-1/1000 IHC: 1/50-1/100

**Host Species:** Rabbit

**Clonality:** Rabbit Monoclonal

**Clone ID:** R01-3D1

**MW:** Calculated MW: 98 kDa; Observed MW: 98,117 kDa

**Isotype:** IgG

**Purification:** Affinity Purified

**Species Reactivity:** Human

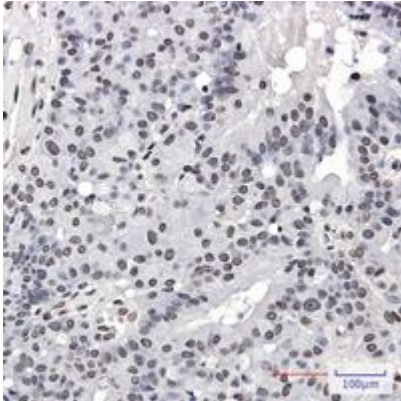
**Conjugation:** Unconjugated

**Modification:** Phosphorylated

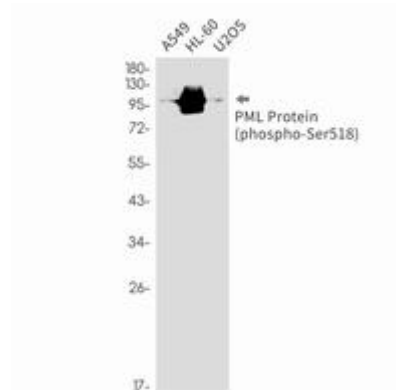
**Constituents:** PBS (without Mg<sup>2+</sup> and Ca<sup>2+</sup>), pH 7.3 containing 50% glycerol, 0.5% BSA and 0.02% sodium azide

**Research Areas:** Epigenetics and Nuclear Signaling

**Storage & Shipping:** Store at -20°C. Avoid repeated freezing and thawing



Immunohistochemistry analysis of paraffin-embedded Human breast cancer using PML Protein (Phospho-Ser518) antibody. High-pressure and temperature Sodium Citrate pH 6.0 was used for antigen retrieval.



Western blot analysis of Phospho-PML Protein (Ser518) in A549, HL-60, U2OS lysates using Phospho-PML Protein (Ser518) antibody.