

PHOSPHO-PKC ZETA/LAMBDA (THR410/THR412) RABBIT MAB

Cat.#: N263186

Product Name: Anti-Phospho-PKC zeta/lambda (Thr410/Thr412) Rabbit Monoclonal Antibody

Synonyms: PRKCG; PKCG; Protein kinase C gamma type; PKC-gamma

UNIPROT ID: P05129

Background: This is a calcium-activated, phospholipid-dependent, serine- and threonine-specific enzyme.

Immunogen: A synthetic phosphopeptide corresponding to residues surrounding Thr410 of human PKC zeta

Applications: WB,IHC-P

Recommended Dilutions: WB: 1/500-1/1000 IHC: 1/50-1/100

Host Species: Rabbit

Clonality: Rabbit Monoclonal

Clone ID: R03-3D0

MW: Calculated MW: 78 kDa; Observed MW: 78 kDa

Isotype: IgG

Purification: Affinity Purified

Species Reactivity: Human,Mouse

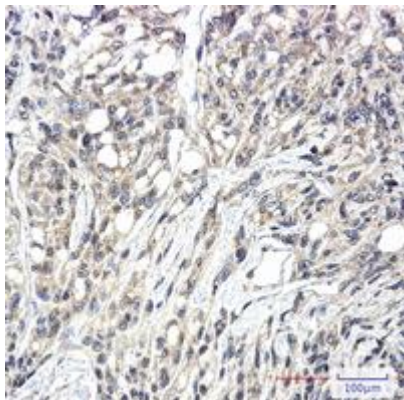
Conjugation: Unconjugated

Modification: Phosphorylated

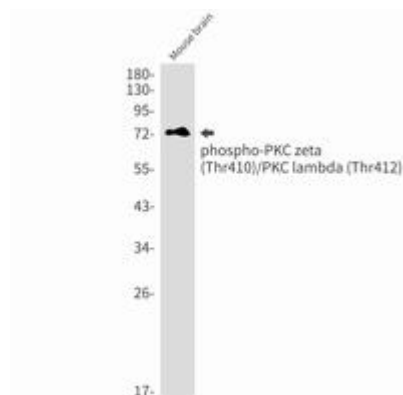
Constituents: PBS (without Mg²⁺ and Ca²⁺), pH 7.3 containing 50% glycerol, 0.5% BSA and 0.02% sodium azide

Research Areas: Signal Transduction

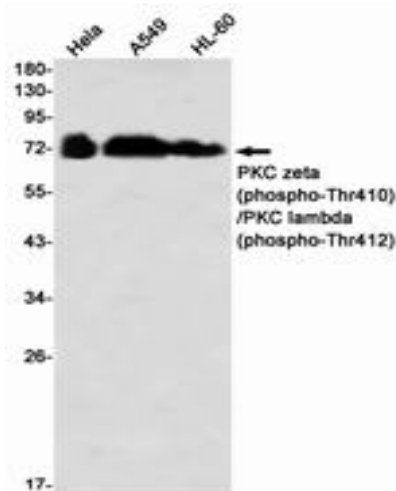
Storage & Shipping: Store at -20°C. Avoid repeated freezing and thawing



Immunohistochemistry analysis of paraffin-embedded Human Brain using PKC zeta (Phospho-Thr410)/PKC lambda (Phospho-Thr412) antibody. High-pressure and temperature Sodium Citrate pH 6.0 was used for antigen retrieval.



Western blot analysis of Phospho-PKC zeta (Thr410)/PKC lambda (Thr412) in mouse brain lysates using Phospho-PKC zeta/lambda (Thr410/Thr412) antibody.



Western blot analysis of PKC zeta (Phospho-Thr410)/PKC lambda (Phospho-Thr412) in HeLa, A549, HL-60 lysates using PKC zeta (Phospho-Thr410)/PKC lambda (Phospho-Thr412) antibody.