

## PHOSPHO-PKC (SER660) RABBIT MAB

**Cat.#:** N263183

**Product Name:** Anti-Phospho-PKC (Ser660) Rabbit Monoclonal Antibody

**Synonyms:** PRKCA; PKCA; PRKACA; Protein kinase C alpha type; PKC-A; PKC-alpha

**UNIPROT ID:** P17252/P05771/Q05655/Q02156/P24723/Q04759

**Background:** PKC alpha is an AGC kinase of the PKC family. A classical PKC downstream of many mitogenic and receptors. Classical PKCs are calcium-dependent enzymes that are activated by phosphatidylserine, diacylglycerol and phorbol esters.

**Immunogen:** A synthetic phosphopeptide corresponding to residues surrounding Ser660 of human PKC

**Applications:** WB,IHC-P

**Recommended Dilutions:** WB: 1/500-1/1000 IHC: 1/50-1/100

**Host Species:** Rabbit

**Clonality:** Rabbit Monoclonal

**Clone ID:** R08-0H5

**MW:** Calculated MW: 77 kDa; Observed MW: 78-85 kDa

**Isotype:** IgG

**Purification:** Affinity Purified

**Species Reactivity:** Human,Rat

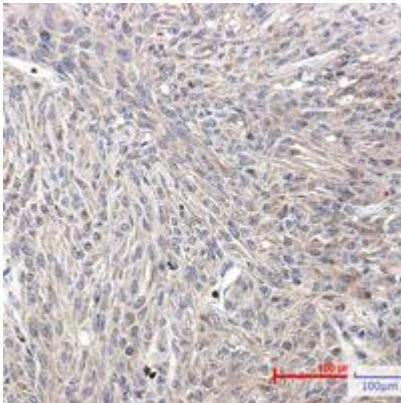
**Conjugation:** Unconjugated

**Modification:** Phosphorylated

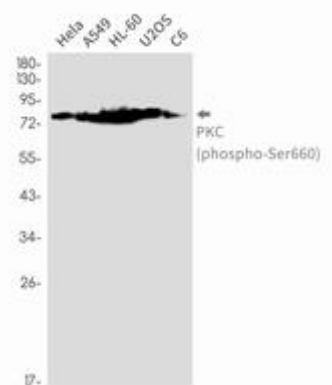
**Constituents:** PBS (without Mg<sup>2+</sup> and Ca<sup>2+</sup>), pH 7.3 containing 50% glycerol, 0.5% BSA and 0.02% sodium azide

**Research Areas:** Signal Transduction

**Storage & Shipping:** Store at -20°C. Avoid repeated freezing and thawing



Immunohistochemistry analysis of paraffin-embedded Human Brain using PKC (Phospho-Ser660) antibody. High-pressure and temperature Sodium Citrate pH 6.0 was used for antigen retrieval.



Western blot analysis of PKC (Phospho-Ser660) in Hela, A549, HL-60, U2OS, C6 lysates using Phospho-PKC (Ser660) antibody.