

## PHOSPHO-PKC ALPHA (THR638) RABBIT PAB

**Cat.#:** N225772

**Product Name:** Anti-Phospho-PKC alpha (Thr638) Rabbit pAb

**Synonyms:** PRKCA; PKCA; PRKACA; Protein kinase C alpha type; PKC-A; PKC-alpha

**UNIPROT ID:** P17252

**Background:** PKC alpha is an AGC kinase of the PKC family. A classical PKC downstream of many mitogenic and receptors. Classical PKCs are calcium-dependent enzymes that are activated by phosphatidylserine, diacylglycerol and phorbol esters.

**Immunogen:** A synthesized peptide derived from human Phospho-PKC alpha (T638)

**Applications:** WB,IHC-P,ICC/IF,IP

**Recommended Dilutions:** WB: 1/500-1/1000 IHC: 1/50-1/100 IF: 1/50-1/200 IP: 1/20

**Host Species:** Rabbit

**Clonality:** Rabbit Polyclonal

**Clone ID:** -

**MW:** Calculated MW: 77 kDa; Observed MW: 80 kDa

**Isotype:** IgG

**Purification:** Affinity Chromatography

**Species Reactivity:** Human,Mouse,Rat

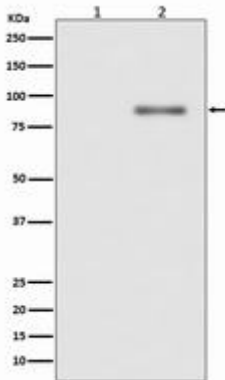
**Conjugation:** Unconjugated

**Modification:** Phosphorylated

**Constituents:** PBS (without Mg<sup>2+</sup> and Ca<sup>2+</sup>), pH 7.3 containing 50% glycerol, 0.5% BSA and 0.02% sodium azide

**Research Areas:** Signal Transduction

**Storage & Shipping:** Store at -20°C. Avoid repeated freezing and thawing



Western blot analysis of Phospho-PKC alpha (T638) in (1) Jurkat lysates treated with TPA; (2) Jurkat lysates using Phospho-PKC alpha (Thr638) antibody.