

## PHOSPHO-PKC ALPHA (SER657) RABBIT MAB

**Cat.#:** N263184

**Product Name:** Anti-Phospho-PKC alpha (Ser657) Rabbit Monoclonal Antibody

**Synonyms:** PRKCA; PKCA; PRKACA; Protein kinase C alpha type; PKC-A; PKC-alpha

**UNIPROT ID:** P17252

**Background:** PKC alpha is an AGC kinase of the PKC family. A classical PKC downstream of many mitogenic and receptors. Classical PKCs are calcium-dependent enzymes that are activated by phosphatidylserine, diacylglycerol and phorbol esters.

**Immunogen:** A synthetic phosphopeptide corresponding to residues surrounding Ser657 of human PKC alpha

**Applications:** WB,IHC-P

**Recommended Dilutions:** WB: 1/500-1/1000 IHC: 1/50-1/100

**Host Species:** Rabbit

**Clonality:** Rabbit Monoclonal

**Clone ID:** R05-813

**MW:** Calculated MW: 77 kDa; Observed MW: 80 kDa

**Isotype:** IgG

**Purification:** Affinity Purified

**Species Reactivity:** Human,Mouse,Rat

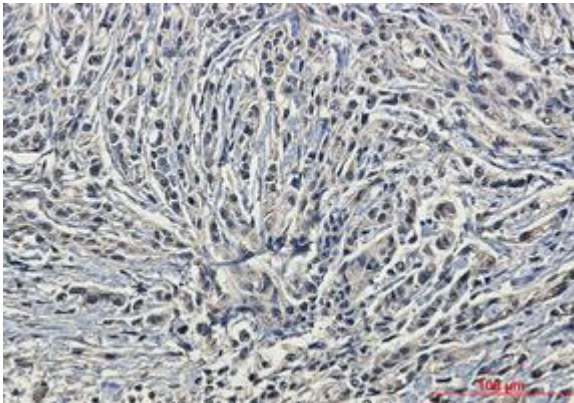
**Conjugation:** Unconjugated

**Modification:** Phosphorylated

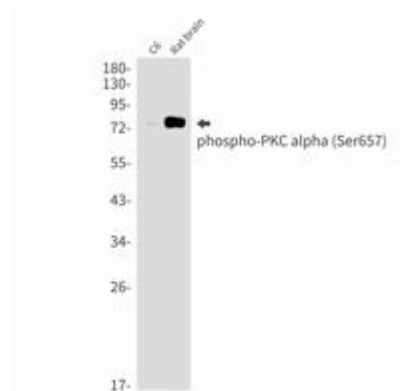
**Constituents:** PBS (without Mg<sup>2+</sup> and Ca<sup>2+</sup>), pH 7.3 containing 50% glycerol, 0.5% BSA and 0.02% sodium azide

**Research Areas:** Signal Transduction

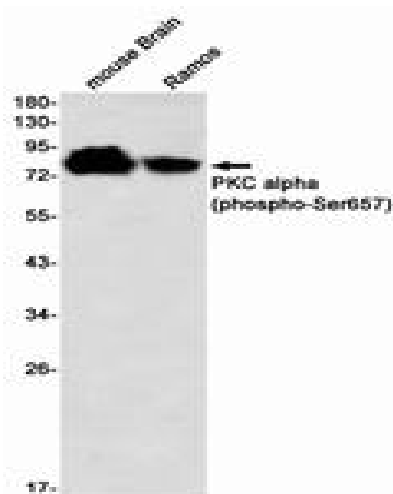
**Storage & Shipping:** Store at -20°C. Avoid repeated freezing and thawing



Immunohistochemistry analysis of paraffin-embedded Human brain using Phospho-PKC alpha (Ser657) antibody. High-pressure and temperature Sodium Citrate pH 6.0 was used for antigen retrieval.



Western blot analysis of Phospho-PKC alpha (Ser657) in C6, rat brain lysates using Phospho-PKC alpha (Ser657) antibody.



Western blot analysis of PKC alpha (Phospho-Ser657) in mouse Brain, Ramos lysates using PKC alpha (Phospho-Ser657) antibody.