

## PHOSPHO-OXSRI (THR185) RABBIT PAB

**Cat.#:** N225307

**Product Name:** Anti-Phospho-OXSRI (Thr185) Rabbit pAb

**Synonyms:** OSR1

**UNIPROT ID:** O95747

**Background:** Phosphorylates RELL1, RELL2 and RELT.

**Immunogen:** Synthetic peptide of human OXSRI

**Applications:** WB,IHC-P

**Recommended Dilutions:** WB: 1/500-1/1000 IHC: 1/50-1/100

**Host Species:** Rabbit

**Clonality:** Rabbit Polyclonal

**Clone ID:** -

**MW:** Calculated MW: 58 kDa; Observed MW: 65 kDa

**Isotype:** IgG

**Purification:** Affinity Purified

**Species Reactivity:** Human

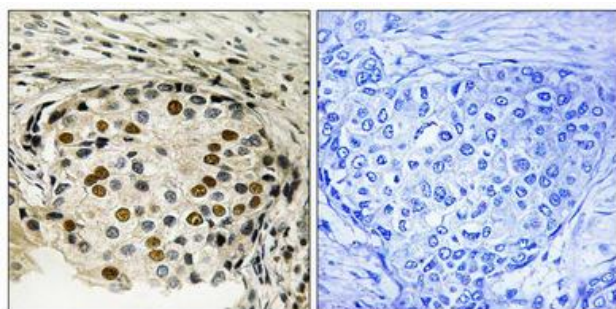
**Conjugation:** Unconjugated

**Modification:** Phosphorylated

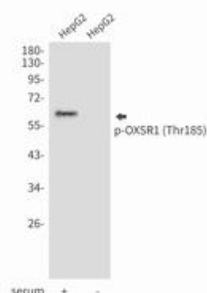
**Constituents:** PBS (without Mg<sup>2+</sup> and Ca<sup>2+</sup>), pH 7.3 containing 50% glycerol, 0.5% BSA and 0.02% sodium azide

**Research Areas:** Signal Transduction

**Storage & Shipping:** Store at -20°C. Avoid repeated freezing and thawing



Immunohistochemistry analysis of paraffin-embedded Human breast carcinoma tissue using OSR1 (Phospho-Thr185) antibody. High-pressure and temperature Sodium Citrate pH 6.0 was used for antigen retrieval. Sample with blocking peptide on the right.



Western blot analysis of Phospho-OXSRI (Thr185) in HepG2 lysates using Phospho-OXSRI (Thr185) antibody.