

## PHOSPHO-MTOR (SER2448) RABBIT MAB

**Cat.#:** N262549

**Product Name:** Anti-Phospho-mTOR (Ser2448) Rabbit Monoclonal Antibody

**Synonyms:** MTOR; FRAP; FRAP1; FRAP2; RAFT1; RAPT1; Serine/threonine-protein kinase mTOR; FK506-binding protein 12-rapamycin complex-associated protein 1; FKBP12-rapamycin complex-associated protein; Mammalian target of rapamycin; mTOR; Mechanistic tar

**UNIPROT ID:** P42345

**Background:** An atypical kinase belonging to the PIKK family of kinases. Controls cell growth through protein synthesis regulation. Downstream of PI3K/Akt pathway and required for cell survival. Acts as the target for the cell-cycle arrest and immunosuppressive effects of the FKBP12-rapamycin complex.

**Immunogen:** A synthetic phosphopeptide corresponding to residues surrounding Ser2448 of human mTOR

**Applications:** WB,IHC-P

**Recommended Dilutions:** WB: 1/500-1/1000 IHC: 1/50-1/100

**Host Species:** Rabbit

**Clonality:** Rabbit Monoclonal

**Clone ID:** R08-7G7

**MW:** Calculated MW: 289 kDa; Observed MW: 289 kDa

**Isotype:** IgG

**Purification:** Affinity Purified

**Species Reactivity:** Human,Mouse

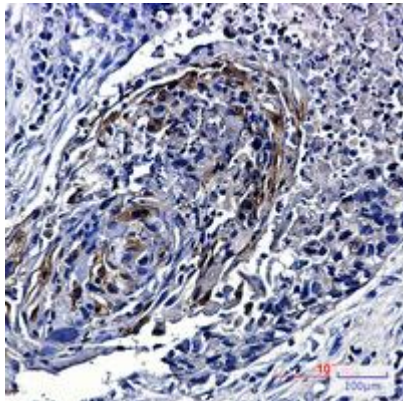
**Conjugation:** Unconjugated

**Modification:** Phosphorylated

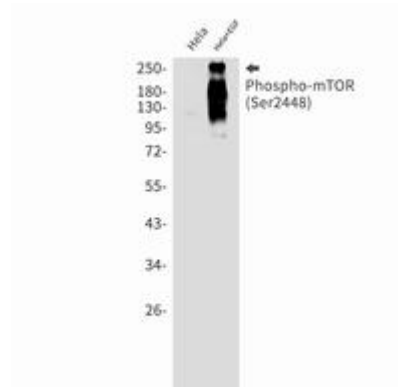
**Constituents:** PBS (without Mg<sup>2+</sup> and Ca<sup>2+</sup>), pH 7.3 containing 50% glycerol, 0.5% BSA and 0.02% sodium azide

**Research Areas:** Hypoxia Signal Transductionyyyyy Hypoxia-induced

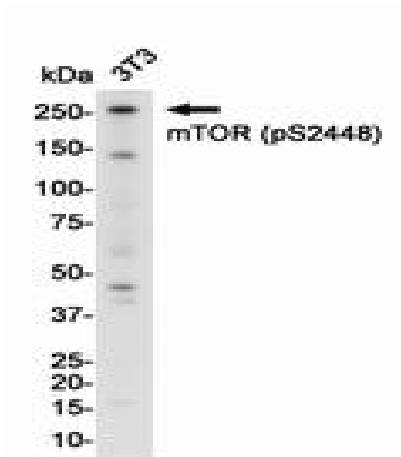
**Storage & Shipping:** Store at -20°C. Avoid repeated freezing and thawing



Immunohistochemistry analysis of paraffin-embedded Human lung cancer using Phospho-mTOR (Ser2448) antibody. High-pressure and temperature Sodium Citrate pH 6.0 was used for antigen retrieval.



Western blot analysis of Phospho-mTOR (Ser2448) in Hela, Hela+EGF lysates using Phospho-mTOR (Ser2448) antibody.



Western blot analysis of mTOR (Phospho-Ser2448) in 3t3 lysates using mTOR (Phospho-Ser2448) antibody.