

## PHOSPHO-MSK1 (SER376) RABBIT MAB

**Cat.#:** N262540

**Product Name:** Anti-Phospho-MSK1 (Ser376) Rabbit Monoclonal Antibody

**Synonyms:** RPS6KA5; MSK1; Ribosomal protein S6 kinase alpha-5; S6K-alpha-5; 90 kDa ribosomal protein S6 kinase 5; Nuclear mitogen- and stress-activated protein kinase 1; RSK-like protein kinase; RSKL

**UNIPROT ID:** O75582

**Background:** Serine/threonine-protein kinase that is required for the mitogen or stress-induced phosphorylation of the transcription factors CREB1 and ATF1 and for the regulation of the transcription factors RELA, STAT3 and ETV1/ER81, and that contributes to gene activation by histone phosphorylation and functions in the regulation of inflammatory genes. Phosphorylates CREB1 and ATF1 in response to mitogenic or stress stimuli such as UV-C irradiation, epidermal growth factor (EGF) and anisomycin.

**Immunogen:** A synthetic phosphopeptide corresponding to residues surrounding Ser376 of human MSK1

**Applications:** WB,IHC-P,IP

**Recommended Dilutions:** WB: 1/500-1/1000 IHC: 1/50-1/100 IP: 1/20

**Host Species:** Rabbit

**Clonality:** Rabbit Monoclonal

**Clone ID:** R01-9A9

**MW:** Calculated MW: 90 kDa; Observed MW: 90 kDa

**Isotype:** IgG

**Purification:** Affinity Purified

**Species Reactivity:** Human,Rat

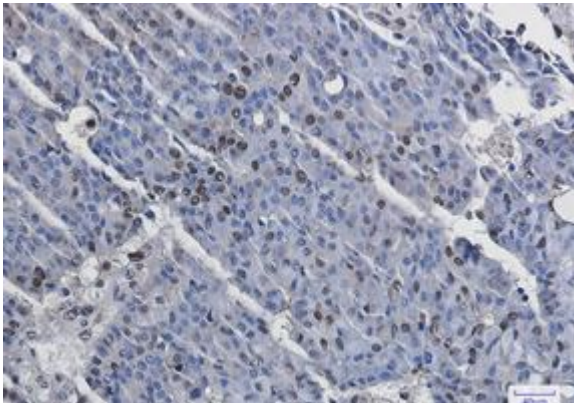
**Conjugation:** Unconjugated

**Modification:** Phosphorylated

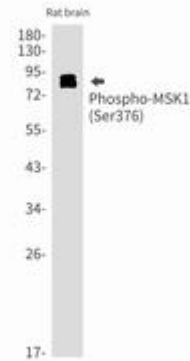
**Constituents:** PBS (without Mg<sup>2+</sup> and Ca<sup>2+</sup>), pH 7.3 containing 50% glycerol, 0.5% BSA and 0.02% sodium azide

**Research Areas:** Signal Transduction

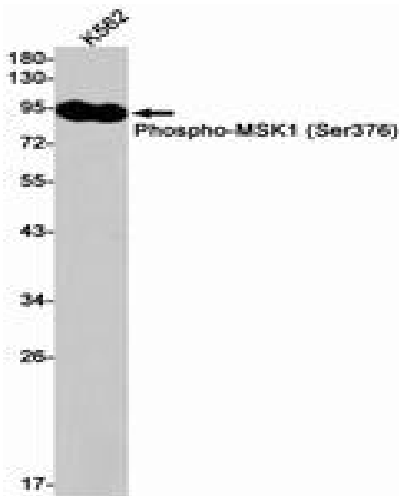
**Storage & Shipping:** Store at -20°C. Avoid repeated freezing and thawing



Immunohistochemistry analysis of paraffin-embedded Human breast cancer using MSK1 (Phospho-Ser376) antibody. High-pressure and temperature Sodium Citrate pH 6.0 was used for antigen retrieval.



Western blot analysis of Phospho-MSK1 (Ser376) in rat brain lysates using Phospho-MSK1 (Ser376) antibody.



Western blot analysis of Phospho-MSK1 (Ser376) in K562 lysates using Phospho-MSK1 (Ser376) antibody.